



WTB®



WE ADVOCATE FOR BIKES

WTB's commitment to cycling excellence extends far beyond our products. We were a leader in local off-road advocacy in the early 1980s, and as we expanded our business around the world we also expanded our cycling vision. Inspired by international best practices for cycling infrastructure, in the late 1990s we shifted our advocacy focus while staying connected to our roots. Since 1993 we have championed sustainable mobility in Marin by dedicating countless hours to cycling infrastructure projects. Working together with advocacy partners, our results include local and federal legislation to fund millions of Marin's cycling infrastructure, opening bicycle (and train) tunnels, rewriting the USA bicycle infrastructure design standards, miles of dedicated cycling facilities, and a chronicle of Study Programs that have empowered our local, national, and international delegates to transform their communities. We are leading by example, teaching what we learn, and inspiring others to take action supporting cycling as the simple solution to so many of today's challenges. Join us.



INTRODUCING OUR 2021 PRODUCT LINE

This product guide is more than a simple catalog of products. It is a showcase of what is important to us both on and off the bike. Some of our products are backed by decades of proven performance and have become part of our WTB heritage, while new ones have been introduced to improve upon the constantly evolving riding experience. What started out as a need to refine the overbuilt cruisers that defined the early days of mountain biking has evolved into a commitment to innovation that encompasses every discipline of cycling. While our heritage is rooted in mountain biking, we've also spent the recent years innovating drop bar cycling with Road Plus 650b and countless proven gravel tires that instill confidence on long, remote rides. Our belief in high-volume tires has brought about plus tires and expanded upon where and how cyclists ride, whether on trails or roads. Available in numerous widths and padding thicknesses, our saddles have become the undisputed gold standard of comfort. Recognizing that making the best saddles is only one part of the process, we introduced our straightforward Fit Right System to help riders find their perfect saddle. This year, we've focused on making our tires lighter and more protected. We now offer five different puncture protection levels, coined SG 1-5, to provide the optimal amount of protection for specific treads, disciplines and front/rear usage. Ride on with confidence.



PAGE 6	OVERVIEW	Product Icon Guide TCS Technology	06 08	TCS 2.0 Technology TCS & TCS 2.0 Compatibility	09 10
PAGE 14	TIRES	SG Puncture Protection Tire Usage Chart Tire Technology	15 19 20	Urban • Hybrid Adventure Road	22 26
PAGE 62	SADDLES	Fit Right Chart Fit Right System	63 64	Saddle Technology Saddle Construction	66 68
PAGE 84	RIMS	Rim Comparison Chart	85	Rim Technology	86
PAGE 92	GRIPS	Clamp-on Grips	93	Slip-on Grips	95
PAGE 98	ACCESSORIES			Tubeless Tape Valves	99 100

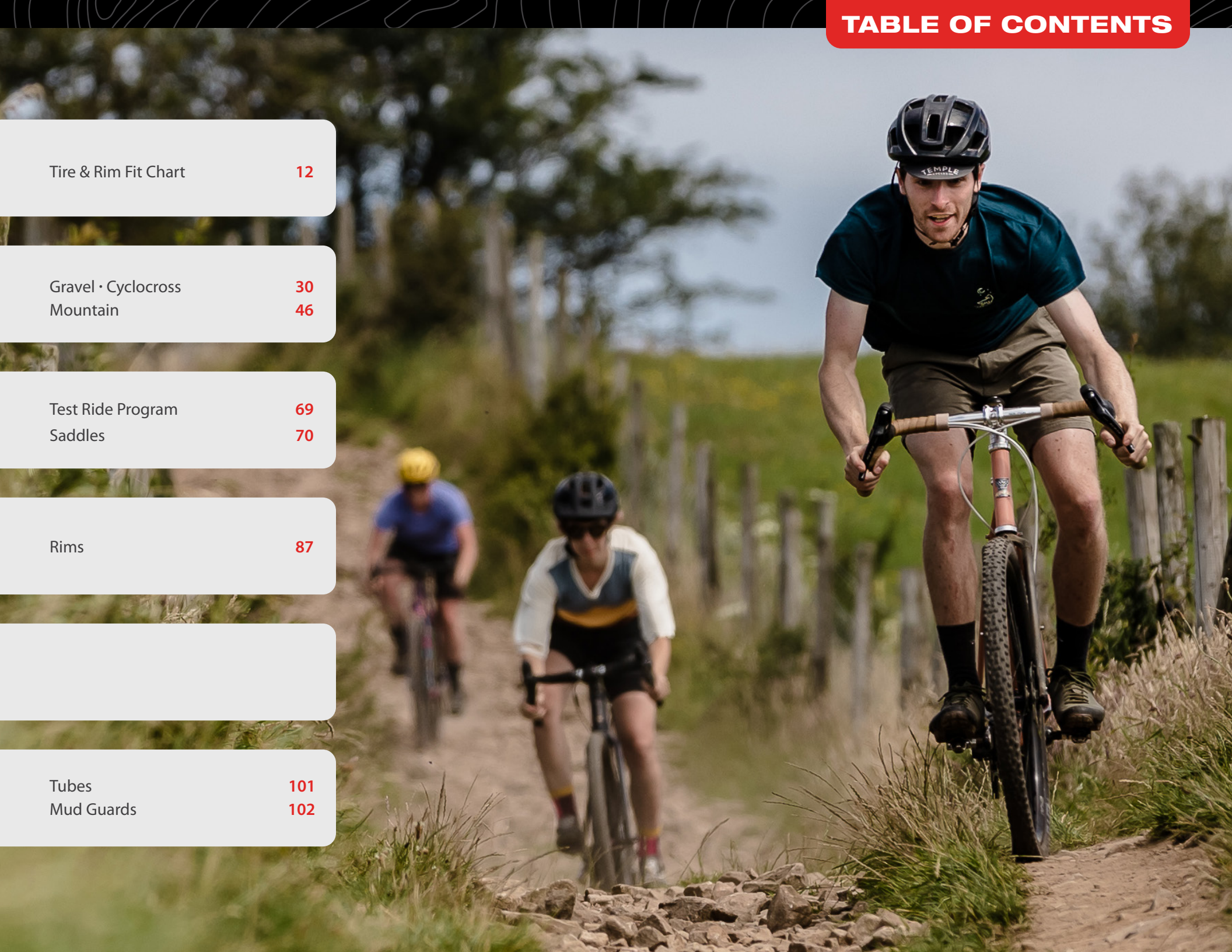
Tire & Rim Fit Chart 12

Gravel • Cyclocross 30
Mountain 46

Test Ride Program 69
Saddles 70

Rims 87

Tubes 101
Mud Guards 102



TIRE ICONS



TCS
(Tubeless Compatible System)



Dual DNA
Compound



TriTec
Compound



E-Bike
Compatible



Tough/High Grip



Tough/Fast Rolling



Light/High Grip



Light/Fast Rolling



Flat Guard



Tube Type Light



SG Puncture Protection

RIM ICONS



TCS 2.0



Disc Only



Sleeved



TCS Tape



Sidewall Indicator



Pinned



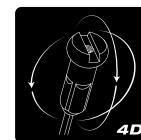
ISO | ETRTO
Compliant



Solid Strip



ASYM



4D Drilling



CID (Compatible
Integrated Design)



Drop Zone



On Ramp



Tube Type



Double Wall



I-Beam



E-Bike
Compatible

SADDLE ICONS



Fit Right System®



Narrow Width



Thin Padding



Medium Width



Medium Padding



Wide Width



Thick Padding

GRIP ICONS



PadLoc®



INFORMATION DEFINED

Our tech icons display key product information, including features, technical specifications, tires levels, saddle fit categories and more. Look for these icons throughout the catalog to help identify different variations of similar products.

OVERVIEW

TIRES

SADDLES

RIMS

GRIPS

ACCS.

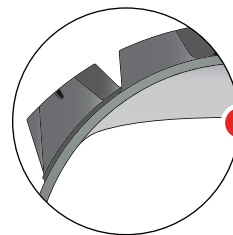


TCS

OVERVIEW

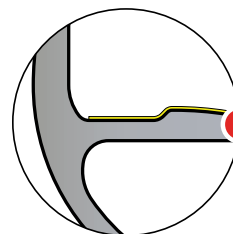
TCS (TUBELESS COMPATIBLE SYSTEM) DESCRIPTION

TCS (Tubeless Compatible System) is our standardized tubeless rim/tire system designed to meet international ETRTO standards and provide the most reliable tubeless system available. Pairing WTB's legendary casings and tread compounds with a Tubeless Folding bead delivers the increased traction and reliability of a tubeless tire at a lower weight than any tubed alternative. Our TCS system includes tires, rims, tape, sealant and valves to provide a comprehensive package of unrivaled tubeless performance and reliability.



SEALANT

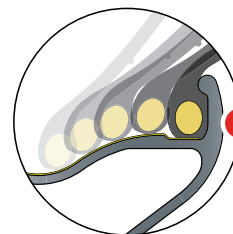
Tubeless sealant allows for the use of a lightweight tire casing while providing superior flat protection.



TCS TAPE

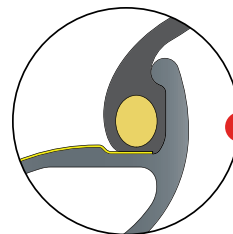
TCS Tape provides an airtight seal that eliminates the need for an inner tube to hold air within the tire.

See Accessories - PG. 99



ON-RAMP

WTB's On-Ramp bead construction provides a consistent fit between rim and tire for easy installation and inflation. On-Ramp also allows riders to easily pop the tire bead to the center of the rim valley before tire removal.



BEADLOCK

Designed around ETRTO standards, Beadlock provides the optimal tubeless rim profile and diameter to ensure superior bead fit and retention.

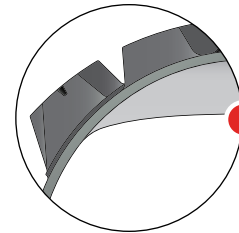


TCS 2.0

OVERVIEW

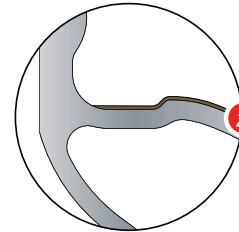
TCS 2.0 DESCRIPTION

Built upon our proven Tubeless Compatible System, TCS 2.0 introduces a more robust, easily-installed, and dependable tubeless system. A recessed channel along the center of TCS 2.0 rims allows installation of the all-new Solid Strip, which prevents tubeless tape from sagging at the spoke holes and results in a smooth, consistent interface between the tire and rim. Once the Solid Strip is installed, TCS Tape is then applied to provide the airtight seal needed for a reliable tubeless system.



SEALANT

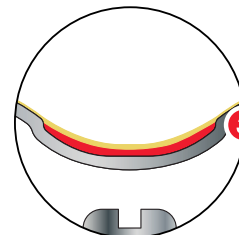
Tubeless sealant allows for the use of a lightweight tire casing while providing superior flat protection.



TCS TAPE

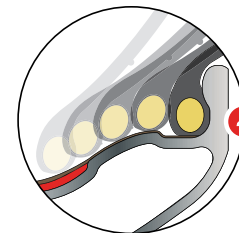
TCS Tape provides an airtight seal that eliminates the need for an inner tube to hold air within the tire.

See Accessories - PG. 99



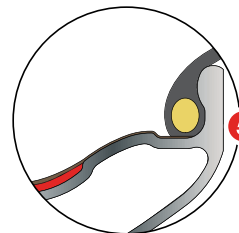
SOLID STRIP

TCS Solid Strip is a durable rim strip that prevents tubeless tape from sagging at the spoke holes, which ensures a smooth interface between tire and rim. This makes it easier to mount a tire by preventing air from escaping through indents in the tubeless tape that are otherwise present on rims without the Solid Strip. The Solid Strip provides the added benefit of protecting the airtight system from puncture in the case of a broken spoke. This results in a more robust tubeless system that is easier to set up.



ON-RAMP

WTB's On-Ramp bead construction provides a consistent fit between rim and tire for easy installation and inflation. On-Ramp also allows riders to easily pop the tire bead to the center of the rim valley before tire removal.



BEADLOCK

Designed around ETRTO standards, Beadlock provides the optimal tubeless rim profile and diameter to ensure superior tire fit and retention.



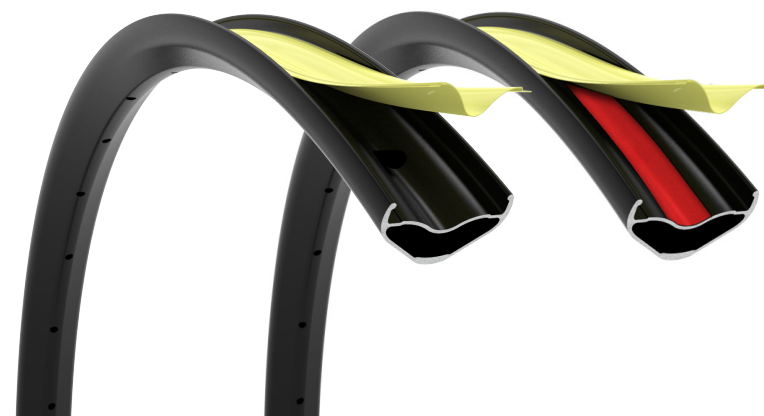
TCS TIRES

ARE COMPATIBLE WITH:

- 1 TCS RIMS & ETRTO STANDARDIZED TUBELESS RIMS
- 2 TCS 2.0 RIMS
- 3 STANDARDIZED TUBE-TYPE RIMS
(INNER TUBE REQUIRED)

NOTE

TCS tires should not be used with oversized rims with dimensions that do not meet ETRTO standards.



TCS & TCS 2.0 RIMS

ARE COMPATIBLE WITH:

- 1 TCS TIRES & OTHER STANDARDIZED TUBELESS TIRES
- 2 TUBE-TYPE TIRES
(INNER TUBE REQUIRED)

NOTE

TCS rims should not be used with non-standardized tires with oversize bead diameters that are outside of ETRTO tolerances.

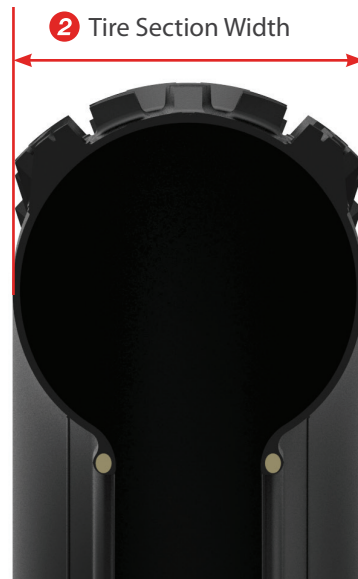


1 Tire Bead Diameter

TIRE BEAD DIAMETER

Internal diameter of the tire bead.

1



2 Tire Section Width

TIRE SECTION WIDTH

The measured width of the casing walls, excluding tread width.

2

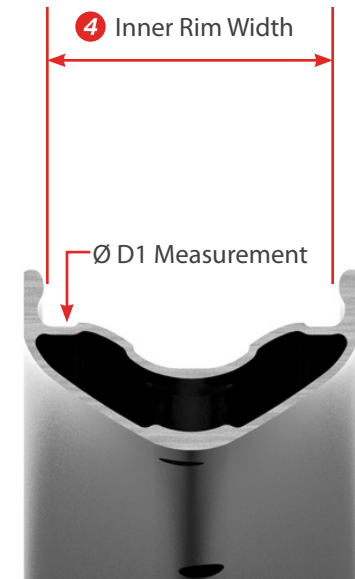


3 D1: Tire Bead Seat Diameter

D1

The diameter of the rim where the bead of the tire sits during use.

3



4 Inner Rim Width

INNER RIM WIDTH

The measured width of the narrowest gap between the two bead hooks.

4

LEGEND



= OPTIMAL PERFORMANCE



= COMPATIBLE



= NOT OPTIMAL

URBAN • HYBRID • ADVENTURE ROAD • GRAVEL • CYCLOCROSS

INNER RIM WIDTH (mm)

mm

NARROW

i13-i17

MEDIUM

i18-i24

WIDE

i25-i30

NOT SUGGESTED

i31-i51

13

14

15

16

17

18

19

20

21

22

23

24

25

26

27

28

29

30

31

32

33

34

35

36

37

38

39

40

41

42

43

45

46

47

48

49

50

51

NARROW

23mm-28mm

MEDIUM

30mm-42mm

WIDE

44mm-50mm

23

25

28

30

32

35

37

40

42

44

45

47

50

•

•

•

•

•

•

•

•

•

•

•

•

•

•

•

•

•

•

•

•

•

•

•

•

•

•

•

•

•

•

•

•

•

•

•

•

•

•

•

•

•

•

•

•

•

•

•

•

•

•

•

•

•

•

•

•

•

•

•

•

•

•

•

•

•

•

•

•

•

•

•

•

•

•

•

•

•

•

•

•

•

•

•

•

•

•

•

•

•

•

•

•

•

•

•

•

•

•

•

•

•

•

•

•

•

•

•

•

•

•

•

•

•

•

•

•

•

•

•

•

•

•

•

•

•

•

•

•

•

•

•

•

•

•

•

•

•

•

•

•

•

•

•

•

•

•

•

•

•

•

•

•

•

•

•

•

•

•

•

•

•

•

•

•

•

•

•

•

•

•

•

•

•

•

•

•

•

•

•

•

•

•

•

•

•

•

•

•

•

•

•

•

•

•

•

•

•

•

•

•

•

•

•

•

•

•

•

•

•

•

•

•

•

•

•

•

•

•

•

•

•

•

•

•

•

•

•

•

•

•

•

•

•

•

•

•

•

•

•

•

•

•

•

•

•

•

•

•

•

•

•

•

•

•

•

•

•

•

•

•

•

•

•

•

•

•

•

•

•

•

•

•

•

•

•

•

•

•

•

•

•

•

•

•

•

•

•

•

•

•

•

•

•

•

•

•

•

•

•

•

•

•

•

•

•

•

•

•

•

•

•

•

•

•

•

•

•

•

•

•

•

•

•

•

•

•

•

•

•

•

•

•

•

•

•

•

•

•

•

•

•

•

•

•

•

•

•

•

•

•

•

•

•

•

•

•

•

•

•

•

•

•

•

•

•

•

•

•

•

•

•

•

•

•

•

•

•

•

•

•

•

•

•

•

•

•

•

•

•

•

•

•

•

•

•

•

•

•

•

•

•

•

•

•

•

•

•

•

•

•

•

•

•

•

•

•

•

•

•

•

•

•

•

•

•

•

•

•

•

•

•

•

•

•

•

•

•

•

•

•

•

•

•

•

•

•

•

•

•

•

•

•

•

•

•

•

•

•

•

•

•

•

•

•

•

•

•

•

•

•

•

•

•

•

•

•

•

•

•

•

•

•

•

•

•

•

•

•

•

•

•

•

•

•

•

•

•

•

•

•

•

•

•

•

•

•

•

•

•

•

•

•

•

•

•

•

•

•

•

•

•

•

•

•

•

•

•

•

•

•

•

•

•

•

•

•

•

•

•

•

•

•

•

•

•

•

•

•

•

•

•

•

•

•

•

•

•

•

•

•

•

•

•

•

•

•

•

•

•

•

•

•

•

•

•

•

•

•

•

•

•

•

•

•

•

•

•

•

•

•

•

•

•

•

•

•

•

•

•

•

•

•

•

•

•

•

•

•

•

•

•

•

•

•

•

•

•

•

•

•

•

•

•

•

•

•

•

•

•

•

•

•

•

•

•

•

•

•

•

•

•

•

•

•

•

•

•

•

•

•

•

•

•

•

•

•

•

•

•

•

•

•

•

•

•

•

•

•

•

•

•

•

•

•

•

•

•

•

•

•

•

•

•

•

•

•

•

•

•

•

•

•

•

•

•

•

•

•

•

•

•

•

•

•

•

•

•

•

•

•

•

•

•

•

•

WARNING

The suggestions above extend beyond current ETRTO recommendations, but allow for more optimal performance. Proceed at your own risk.

TIRES

UNBEATABLE PUNCTURE PROTECTION

Our tubeless tires are now both lighter and more protected. Seems too good to be true, right?

Available in five different configurations, all-new SG Puncture Protection allows riders to fine-tune the amount of protection they want depending on the tread, riding discipline or front/rear application. We've introduced supple 120tpi tires for gram-conscious drop bar and cross-country riders, while also providing burly dual-ply 60tpi mountain tires with additional puncture protection for e-bike riders who prioritize durability and aren't worried about adding a bit of weight to achieve it.



SG2 PUNCTURE PROTECTION

PROTECTED DROP BAR TIRES FEATURING 120TPI CASING AND SG2

WTB drop bar tires are now available in a protected option featuring a 120tpi casing and all-new SG2 puncture protection, which is a lightweight, ultra-thin nylon insert that provides bead-to-bead coverage and ensures no area is left unprotected. The nylon fibers of the bead-to-bead insert have a flat profile, which reduces the amount of rubber needed to fill the gaps between fibers and therefore uses less rubber compared to traditional round fibers. Using less rubber minimizes weight and improves the liveliness of the tire by decreasing the overall tire casing thickness. SG2 was specifically designed to be a puncture protection layer, but also improves air retention in high-pressure tires. WTB's protected drop bar tires drastically improve both puncture protection and air retention while also increasing suppleness compared to a 60tpi casing.

1 120TPI CASING

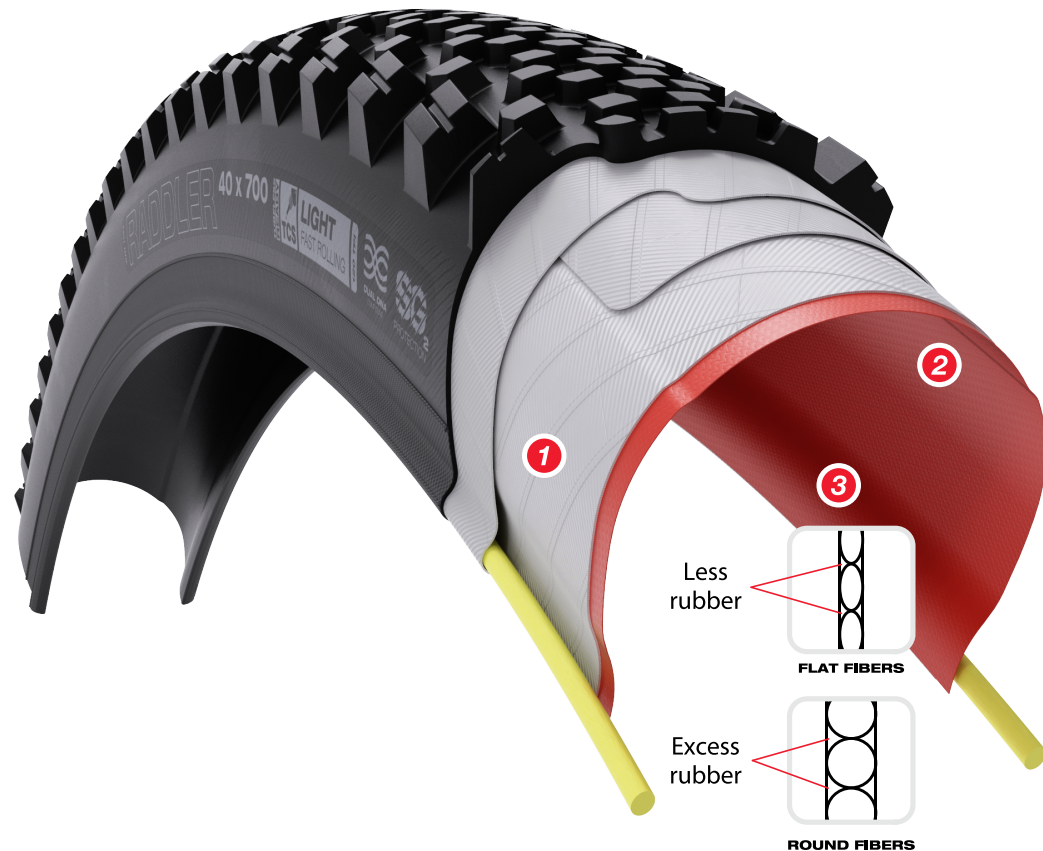
Thin nylon threads of a 120tpi casing require minimal rubber between each thread, which results in a tire that is thinner, lighter and more supple compared to a 60tpi casing.

2 SG2 PUNCTURE PROTECTION

SG2 defends all surfaces of a tire by providing an uninterrupted layer of puncture protection from bead to bead.

3 FLAT NYLON FIBERS

Flat fibers require less rubber between them, which results in less overall weight. This allows our protected drop bar tires to offer considerably better puncture protection with only a small increase in weight.



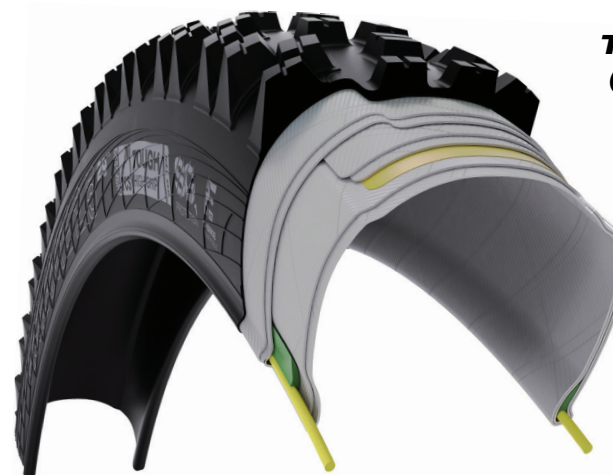
SG1-5 PUNCTURE PROTECTION

GRAPHIC SHOWS PLACEMENT OF ALL POSSIBLE SG LAYERS FOR LIGHT AND TOUGH CASINGS

WTB mountain tires also receive SG puncture protection for 2021! Ranging from SG1 to SG5, the progressive naming structure increases in relation to the amount of SG puncture protection within a tire. The nylon fibers of our SG layers have a uniquely flat profile, which reduces the amount of rubber needed to fill the gaps between fibers and therefore uses less rubber compared to traditionally round fibers. Using less rubber minimizes weight and improves the liveliness of a tire by decreasing the overall tire casing thickness. While SG was specifically designed to be a puncture protection material, its tightly woven fibers also improve air retention and minimize pressure loss over time. Five different SG options ensure riders always have the perfect amount of weight-optimized puncture protection for every discipline, bike and riding style. This also means riders now have the ability to choose SG levels that are more protected and supportive on the rear, while selecting a lighter option for the front.



**TCS Light
(Single-Ply)**



**TCS Tough
(Dual-Ply)**

UNDER TREAD PROTECTION
SIDEWALL PROTECTION

BEAD-TO-BEAD PROTECTION
BEAD PROTECTION

	UNDER TREAD	SG1 provides a layer of protection beneath the tread to prevent punctures between the knobs of a tire.
	BEAD-TO-BEAD	SG2 defends all surfaces of a tire by providing an uninterrupted layer of puncture protection from bead to bead.
	BEAD-TO-BEAD + SIDEWALL	SG3 provides a full layer of bead-to-bead puncture protection as well as an additional layer of sidewall protection.

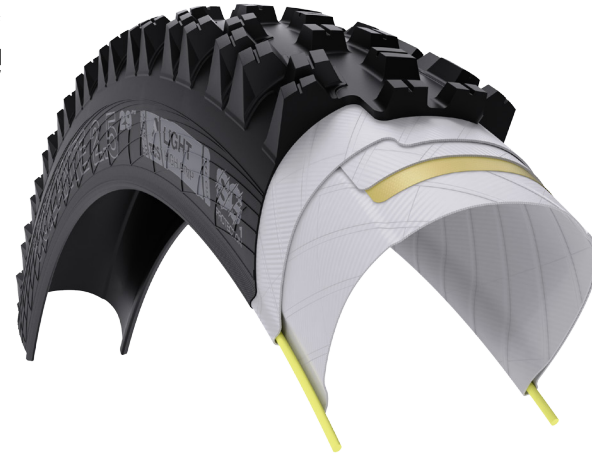
	BEAD-TO-BEAD + UNDER TREAD	SG4 features a layer of puncture protection from bead to bead as well as an additional layer beneath the tread.
	BEAD-TO-BEAD + UNDER TREAD + BEAD	SG5 provides uninterrupted puncture protection throughout the tire with additional pinch flat and tread protection.

SG1-5 PUNCTURE PROTECTION

TCS LIGHT (SINGLE-PLY)



TCS LIGHT WITHOUT
SG PROTECTION



UNDER TREAD PROTECTION



BEAD-TO-BEAD PROTECTION



BEAD-TO-BEAD PROTECTION
SIDEWALL PROTECTION

INTRO

TIRES

SADDLES

RIMS

GRIPS

ACCS.

SG1-5 PUNCTURE PROTECTION

TCS LIGHT (SINGLE-PLY)

SG4
PROTECTION



BEAD-TO-BEAD PROTECTION
UNDER TREAD PROTECTION

SG5
PROTECTION



BEAD-TO-BEAD PROTECTION
UNDER TREAD PROTECTION
BEAD PROTECTION

TCS TOUGH (DUAL-PLY)



**TCS TOUGH WITHOUT
SG PROTECTION**

BEAD PROTECTION

*Included in all TCS Tough tires regardless of SG level.

SG1
PROTECTION



UNDER TREAD PROTECTION
BEAD PROTECTION

*Included in all TCS Tough tires regardless of SG level.

PUNCTURE PROTECTION • TIRE USAGE CHART

TIRE NAME	FIRM		MIXED TERRAIN		SOFT	
	PAVEMENT	HARDBACK	DIRT	GRAVEL	LOOSE	WET
URBAN • HYBRID						
All Terrain						
Slick						
Thickslick						
ADVENTURE ROAD						
Expanse						
Exposure						
GRAVEL • CYCLOCROSS						
Byway						
Cross Boss						
Crosswolf						
Horizon						
Nano						
Riddler						
Raddler						
Resolute						
Sendero						
Venture						
Vulpine						

TIRE NAME	FIRM		MIXED TERRAIN		SOFT	
	HARDBACK	LOOSE OVER HARD	DIRT	LOOSE • ROCKY	WET	MUD
MOUNTAIN						
Judge						
Nano						
Nano 2.1						
Nine Line						
Ranger						
Trail Boss 2.25						
Trail Boss 2.4 & 2.6						
VelociRaptor						
Verdict						
Verdict Wet						
Vigilante						

TERMINOLOGY

TPI

TPI (threads per inch) refers to the thread count in a tire's casing. A lower TPI indicates that thicker threads are woven into the casing, therefore making it more durable; a higher TPI indicates that thinner threads are used, therefore making the casing lighter and more pliable. WTB's 60 TPI, TCS and Tube Type Light tires offer a supple casing with shock absorption qualities while remaining resistant to cuts and tears.

DUROMETER

The durometer of rubber refers to its hardness, which is rated according to its resistance to indentation. The lower the durometer rating, the softer the compound is. For example, a 42A compound will be softer than a 60A compound. Many TCS tubeless tires are made using multiple compounds with different durometer ratings.

SIPING

Sipes are small incisions on a tire's tread. Siping a knob creates more working edges, which boosts traction in virtually any condition. Because WTB's high-end mountain bike tires feature shallow sipes, the knobs stay firm under heavy loads and hard braking.

TIRE PRESSURE

The amount of air pumped into a tire affects its traction and ride characteristics. Too much pressure will result in a rough ride and lack of traction. Too little pressure will result in a squirmy ride and potentially unsafe bead retention that may not hold the tire on the rim while cornering. All WTB tires have recommended tire pressures indicated on the sidewall.

FOLDING BEAD

The area of the tire where it contacts the rim is called the bead. Tires with Folding beads utilize high-strength kevlar fibers that are spun into the bead to provide ultimate durability while also being lightweight and foldable. All TCS tires have Folding beads.

WIRE BEAD

The area of the tire where it contacts the rim is called the bead. Tires with wire beads utilize a thin, woven wire throughout the length of the bead to provide strength and proper tire retention. Tires with a wire bead cannot be folded. Entry-level tires are often made with a wire bead to provide them at an affordable price.

GMS (GLOBAL MEASURING SYSTEM)

Our Global Measuring System presents precise tire widths using two measurements, the casing width and overall width of the tread. Casing width is written first, followed by the tread width. GMS measurements are always provided in millimeters. GMS values are determined by measuring casing and tread widths when a tire is mounted to the specific inner rim width a tire was designed for according to ISO standards. Different inner rim widths will provide different measurable section widths using the same tire.

E25 COMPATIBLE

Tires with an E25 icon on the sidewall are designed to withstand the additional weight and forces of modern e-bikes. E25 tires are constructed with additional material to not only strengthen the tire and prevent punctures, but also provide additional support throughout the tire.

SYSTEMS

TCS

TCS (Tubeless Compatible System) is our standardized tubeless rim/tire system designed to meet international ETRTO standards and provide the most reliable tubeless system available. Pairing WTB's legendary casings and tread compounds with a Tubeless Folding bead delivers the increased traction and reliability of a tubeless tire at a lower weight than any tubed alternative. Our TCS system includes tires, rims, tape, sealant and valves to provide a comprehensive package of unrivaled tubeless performance and reliability.

TCS 2.0

Built upon our proven Tubeless Compatible System, TCS 2.0 introduces a more robust, easily-installed, and dependable tubeless system. A recessed channel along the center of TCS 2.0 rims allows installation of the all-new Solid Strip, which prevents tubeless tape from sagging at the spoke holes and results in a smooth, consistent interface between the tire and rim. Once the Solid Strip is installed, TCS Tape is then applied to provide the airtight seal needed for a reliable tubeless system. is installed, TCS Tape is then applied to provide the airtight seal needed for a reliable tubeless system.

CONFIGURATIONS

TCS LIGHT/FAST ROLLING

A fast and efficient centerline tread compound matched to sticky, low durometer side knobs coat a supple, gram-conscious casing designed to be compliant while still trail worthy.

TCS LIGHT/HIGH GRIP

Glue-like conforming rubber wrapped onto a gram-conscious casing designed to be compliant while still trail worthy. Who says High Grip needs to be heavy?

TCS TOUGH/FAST ROLLING

Long-wearing rubber laid across two full layers of casing leaves no area unprotected. Developed through real testing during the Enduro World series, TCS Tough tires can take some serious abuse.

TCS TOUGH/HIGH GRIP

Glue-like conforming rubber draped over two full layers of casing leaves no area unprotected. Developed through real testing during the Enduro World Series, TCS Tough tires can take some serious abuse.

CASINGS

TCS LIGHT CASING

One layer of supple, gram-conscious casing conforms to the terrain to provide maximum performance, exceptional reliability and low rotational weight.

TCS TOUGH CASING

Take our TCS Light casing and...well... double it. TCS Tough Casing is composed of two full layers of casing from bead to bead. Regardless of puncture protection spec, all TCS Tough tires feature bead protection for additional defense against pinch flats.

RACE CASING

Now called Tube Type Light, it is a lightweight casing paired to a folding Folding bead. This casing type is ideal for the rider using inner tubes but demanding high-end performance from their tires.

TUBE-TYPE LIGHT

Once called Race, our Tube Type Light tires have a lightweight casing paired to a folding Folding bead. This casing type is ideal for the rider using inner tubes but demanding high-end performance from their tires. These tires utilize a bead shape that relies on tire retention through proper installation and inflation of a properly sized inner tube.

COMP TIRES

Cost effective tires that feature grippy DNA rubber, durable impervious casings, and wire beads designed for use with a tube.

PUNCTURE PROTECTION

SG1

SG1 provides a layer of protection beneath the tread to prevent punctures between the knobs of a tire.

SG2

SG2 defends all surfaces of a tire by providing an uninterrupted layer of puncture protection from bead to bead.

SG3

SG3 provides a full layer of bead-to-bead puncture protection as well as an additional layer of sidewall protection.

SG4

SG4 features a layer of puncture protection from bead to bead as well as an additional layer beneath the tread.

SG5

SG5 provides uninterrupted puncture protection throughout the tire with additional pinch flat and tread protection.

FLAT GUARD

The Flat Guard (FG) level of WTB tires features an Urban Armor Casing, which provides additional rubber throughout the entire casing and sidewall to deliver additional puncture protection while also ensuring it holds up to cornering on asphalt and even the occasional curb rub. Additionally, Flat Guard tires utilize an extra layer of rubber beneath the whole width of the tread to provide even more thickness in the region where the tires are most likely to encounter sharp, intrusive objects.

COMPOUNDS

TRITEC COMPOUND

Three compounds provide optimal levels of traction, support and durability. A base of high durometer rubber supports the entire tread and transitions into the knobs to prevent folding or squirming. Medium stiffness center knobs cap the base layer to provide traction and durability without sacrificing rolling efficiency, while soft compound side knobs deliver maximum grip and slow rebound for increased cornering traction.

DUAL DNA COMPOUND

Dual DNA is the perfect mix of efficiency, traction and durability. The centerline tread features a firmer rubber compound that boasts faster rolling and increased durability, while the side knobs are composed of softer, slower-rebounding rubber that improves control and grip.

DNA COMPOUND

Our proprietary 60A durometer rubber compound offers the ideal mix of rolling efficiency and traction for Cross-Country and trail riding applications. DNA rubber is renowned for being versatile and long lasting.

URBAN | HYBRID





THICKSLICK

26"

27.5"

29"

700

USAGES: *Urban*
CONDITIONS: *Pavement*

TIRE DESCRIPTION

It's all in the name, ThickSlick. A burly casing designed to withstand the roughest urban conditions paired with a slick tread design that provides the bite you need in the concrete jungle with impeccable style.



WIDTH	LEVEL	WEIGHT	PUNCTURE PROTECTION	TPI	COMPOUND	BEAD	TIRE SIZE DESIGNATION	OPTIMAL INNER RIM WIDTH	GMS	PART #
26"										
2.0	Comp	620g	n/a	30tpi	DNA	Wire	50 - 559	17c - 36c	51/51	W010-0658
27.5"										
1.95	Comp	710g	n/a	30tpi	DNA	Wire	50-584	17c - 36c	50/50	W010-0607
29"										
2.1	Comp	698g	n/a	30tpi	DNA	Wire	52-622	17c - 36c	52/52	W010-0613
700										
25	Comp	260g	n/a	30tpi	DNA	Wire	25 - 622	13c - 19c	25/25	W010-0610
25	Comp (white)	260g	n/a	30tpi	DNA	Wire	25 - 622	13c - 19c	25/25	W010-0645
25	Flat Guard	487g	FG	30tpi	DNA	Wire	25 - 622	13c - 19c	25/25	W010-0616
28	Comp	467g	n/a	30tpi	DNA	Wire	28 - 622	15c - 21c	28/28	W010-0611
28	Flat Guard	490g	FG	30tpi	DNA	Wire	28 - 622	15c - 21c	28/28	W010-0617

INTRO

TIRES

SADDLES

RIMS

GRIPS

ACCS.

2.2

SLICK**29"****USAGES:** *Urban***CONDITIONS:** *Pavement***TIRE DESCRIPTION**

Slick is the ideal tire for year-round, all-weather commuters. Simple and dependable, the Slick is an affordable tire that gets the job done without unnecessary frill. Choose the Slick when you need to get from point A to point B without any hiccups along the way.



Photo: Alen Palander

WIDTH	LEVEL	WEIGHT	PUNCTURE PROTECTION	TPI	COMPOUND	BEAD	TIRE SIZE DESIGNATION	OPTIMAL INNER RIM WIDTH	GMS	PART #
29"										
2.2	Comp	979g	n/a	30tpi	Distance	Wire	54-622	19c - 38c	54/52	W010-0491



32 • 37

1.95

ALL TERRAIN**26"****700****USAGES:** *Urban***CONDITIONS:** *Pavement • Hardpack***TIRE DESCRIPTION**

The All Terrain is always up for adventure. From long-distance touring to light-duty offroading, this tire offers impeccable handling that won't let you down.



Photo: Alen Palander

WIDTH	LEVEL	WEIGHT	PUNCTURE PROTECTION	TPI	COMPOUND	BEAD	TIRE SIZE DESIGNATION	OPTIMAL INNER RIM WIDTH	GMS	PART #
26"										
1.95	Comp	635g	n/a	30tpi	DNA	Wire	47-559	17c - 35c	47/47	W010-0359
700										
32	Comp	455g	n/a	30tpi	DNA	Wire	32-622	15c - 24c	32/32	W010-0397
37	Comp	540g	n/a	30tpi	DNA	Wire	37-622	17c - 26c	35/37	W010-0396

INTRO

TIRES

SADDLES

RIMS

GRIPS

ACCS.

ADVENTURE ROAD







32

EXPANSE

700

USAGES: *Adventure Road*

CONDITIONS: *Pavement • Hardpack*

TIRE DESCRIPTION

Expanse epitomizes high-end road that isn't fazed by rough surfaces and lengthy detours. The slick centerline and hatched intermediate tread of the Expanse transitions into minimalistic outer knobs that instill confidence regardless of road conditions. Featuring a dependable tubeless casing, Expanse delivers a smooth riding experience while remaining resilient on unpredictable terrain. Intended for riders who leave home without a set destination and are simply along for the ride...albeit at an expeditious pace.



Photo: Abner Kingman

NEW

WIDTH	LEVEL	WEIGHT	PUNCTURE PROTECTION	TPI	COMPOUND	BEAD	TIRE SIZE DESIGNATION	OPTIMAL INNER RIM WIDTH	GMS	PART #
700										
32	TCS Light/Fast Rolling SG2	332g	SG2	120tpi	Dual DNA	Tubeless Folding	32-622	15c - 24c	32/32	W010-0952
32	TCS Light/Fast Rolling	332g	n/a	60tpi	Dual DNA	Tubeless Folding	32-622	15c - 24c	32/32	W010-0815
32	TCS Light/Fast Rolling (tan)	312g	n/a	60tpi	Dual DNA	Tubeless Folding	32-622	15c - 24c	32/32	W010-0816



EXPOSURE

700

USAGES: *Adventure Road*

CONDITIONS: *Pavement*

TIRE DESCRIPTION

The smooth centerline of the Exposure optimizes efficiency while hatched outer edges provide cornering confidence on rough, unpredictable surfaces. Exposure features a high-volume tubeless casing to comfortably tackle crumbling tarmac while still delivering the swiftness of a mostly-slick road tire. Mount up a set and hit the open, yet sometimes rough, road.



Photo: Abner Kingman

	WIDTH	LEVEL	WEIGHT	PUNCTURE PROTECTION	TPI	COMPOUND	BEAD	TIRE SIZE DESIGNATION	OPTIMAL INNER RIM WIDTH	GMS	PART #
	700										
NEW	30	TCS Light/Fast Rolling SG2	TBD	SG2	120tpi	Dual DNA	Tubeless Folding	30-622	15c - 24c	30/30	W010-0953
	30	TCS Light/Fast Rolling	302g	n/a	60tpi	Dual DNA	Tubeless Folding	30-622	15c - 24c	30/30	W010-0639
	30	TCS Light/Fast Rolling (tan)	314g	n/a	60tpi	Dual DNA	Tubeless Folding	30-622	15c - 24c	30/30	W010-0693
NEW	36	TCS Light/Fast Rolling SG2	TBD	SG2	120tpi	Dual DNA	Tubeless Folding	36-622	17c - 26c	36/36	W010-0954
	36	TCS Light/Fast Rolling	403g	n/a	60tpi	Dual DNA	Tubeless Folding	36-622	17c - 26c	36/36	W010-0813
	36	TCS Light/Fast Rolling (tan)	351g	n/a	60tpi	Dual DNA	Tubeless Folding	36-622	17c - 26c	36/36	W010-0814

GRAVEL | CYCLOCROSS







VENTURE

650

700

USAGES: *Adventure Road • Gravel • Bikepacking*

CONDITIONS: *Pavement • Hardpack • Dirt • Gravel • Loose*

TIRE DESCRIPTION

Venture is a set-it-and-forget-it gravel tire for riders who demand steady-fast traction on a wide range of surfaces. Elevated centerline ridges and dense intermediate peaks conform to any terrain during out-of-the-saddle efforts while two rows of outer knobs provide both the support and sidewall protection you need to really push it in the corners. Venture is an excellent choice when both the terrain and destination are unknown.

	WIDTH	LEVEL	WEIGHT	PUNCTURE PROTECTION	TPI	COMPOUND	BEAD	TIRE SIZE DESIGNATION	OPTIMAL INNER RIM WIDTH	GMS	PART #
650											
NEW	47	TCS Light/Fast Rolling SG2	617g	SG2	120tpi	Dual DNA	Tubeless Folding	44-584	17c - 32c	45/47	W010-0843
	47	TCS Light/Fast Rolling	586g	n/a	60tpi	Dual DNA	Tubeless Folding	44-584	17c - 32c	45/47	W010-0825
	47	TCS Light/Fast Rolling (tan)	555g	n/a	60tpi	Dual DNA	Tubeless Folding	44-584	17c - 32c	45/47	W010-0760
700											
NEW	40	TCS Light/Fast Rolling SG2	551g	SG2	120tpi	Dual DNA	Tubeless Folding	37-622	17c - 26c	37/40	W010-0844
	40	TCS Light/Fast Rolling	501g	n/a	60tpi	Dual DNA	Tubeless Folding	37-622	17c - 26c	37/40	W010-0803
	40	TCS Light/Fast Rolling (tan)	472g	n/a	60tpi	Dual DNA	Tubeless Folding	37-622	17c - 26c	37/40	W010-0804
NEW	50	TCS Light/Fast Rolling SG2	662g	SG2	120tpi	Dual DNA	Tubeless Folding	47-622	17c - 35c	47/50	W010-0845
	50	TCS Light/Fast Rolling	626g	n/a	60tpi	Dual DNA	Tubeless Folding	47-622	17c - 35c	47/50	W010-0807
	50	TCS Light/Fast Rolling (tan)	600g	n/a	60tpi	Dual DNA	Tubeless Folding	47-622	17c - 35c	47/50	W010-0808





36

VULPINE

700

USAGES: *Gravel*

CONDITIONS: *Pavement • Hardpack • Dirt • Gravel*

TIRE DESCRIPTION

Vulpine is the gravel revamp of a proven semi-slick mountain tread with years of swift efficiency under its belt. Ramped center knobs form a nearly uninterrupted centerline that decreases rolling resistance while its round tire profile is packed with short, tightly-spaced knobs to provide predictable cornering traction on hardpack terrain. Delivering speed that lasts, the large center knobs make the Vulpine highly resistant to wear and improve its lifespan compared to other gravel tires.



Photo: Sven Martin

	WIDTH	LEVEL	WEIGHT	PUNCTURE PROTECTION	TPI	COMPOUND	BEAD	TIRE SIZE DESIGNATION	OPTIMAL INNER RIM WIDTH	GMS	PART #
	700										
NEW	36	TCS Light/Fast Rolling SG2	TBD	SG2	120tpi	Dual DNA	Tubeless Folding	36-622	19 - 24mm	40/38	W010-0940
NEW	36	TCS Light/Fast Rolling	TBD	n/a	60tpi	Dual DNA	Tubeless Folding	36-622	19 - 24mm	40/38	W010-0942
NEW	36	TCS Light/Fast Rolling (tan)	TBD	n/a	60tpi	Dual DNA	Tubeless Folding	36-622	19 - 24mm	40/38	W010-0941



SENDERO

650

USAGES: *Adventure Road • Gravel • Trail • Bikepacking*

CONDITIONS: *Hardpack • Dirt • Gravel • Loose • Wet*

TIRE DESCRIPTION

Sendero is for those who believe sending it shouldn't be limited to mountain bikes. As the first Road Plus™ tire designed solely with dirt in mind, the Sendero combines drop bar efficiency with the capabilities of an aggressive tread pattern. Ramped center knobs minimize rolling resistance while substantially spaced outer knobs ensure footing in loose terrain. Sendero was designed to be an aggressive tire without compromise. Looking to ride mountain bike tires on your drop bar bike? The Sendero is for you.



Photo: Aubrey Roper

WIDTH	LEVEL	WEIGHT	PUNCTURE PROTECTION	TPI	COMPOUND	BEAD	TIRE SIZE DESIGNATION	OPTIMAL INNER RIM WIDTH	GMS	PART #
650										
NEW 47	TCS Light/Fast Rolling SG2	TBD	SG2	120tpi	Dual DNA	Tubeless Folding	47-584	17c - 35c	47/48	W010-0846
47	TCS Light/Fast Rolling	621g	n/a	60tpi	Dual DNA	Tubeless Folding	47-584	17c - 35c	47/48	W010-0826
47	TCS Light/Fast Rolling (tan)	568g	n/a	60tpi	Dual DNA	Tubeless Folding	47-584	17c - 35c	47/48	W010-0759



INTRO

TIRES

SADDLES

RIMS

GRIPS

ACCS.



BYWAY

650

700

USAGES: *Adventure Road • Gravel*

CONDITIONS: *Pavement • Hardpack • Dirt • Gravel*

TIRE DESCRIPTION

Byway is the gravel tire of choice for long days of endless exploration when pavement, hardpack and gravel are all on the menu. Staying true to the adventure road end of its usage, a slick centerline and angular grooves encourage swiftness on any pavement required to get to the good stuff. Intermediate, diamond-shaped peaks provide steadfast traction under power, while consistent and more substantial side knobs extend down the sidewall to provide cornering confidence and puncture protection.



Photo credit: Wayne James Blunt Reid



Photo: Aubrey Roper

	WIDTH	LEVEL	WEIGHT	PUNCTURE PROTECTION	TPI	COMPOUND	BEAD	TIRE SIZE DESIGNATION	OPTIMAL INNER RIM WIDTH	GMS	PART #
650											
NEW	47	TCS Light/Fast Rolling SG2	577g	SG2	120tpi	Dual DNA	Tubeless Folding	47-584	17c - 35c	47/47	W010-0839
	47	TCS Light/Fast Rolling	564g	n/a	60tpi	Dual DNA	Tubeless Folding	47-584	17c - 35c	47/47	W010-0701
	47	TCS Light/Fast Rolling (tan)	535g	n/a	60tpi	Dual DNA	Tubeless Folding	47-584	17c - 35c	47/47	W010-0677
700											
NEW	34	TCS Light/Fast Rolling SG2	TBD	SG2	120tpi	Dual DNA	Tubeless Folding	34-622	17c - 25c	34/34	W010-0951
	34	TCS Light/Fast Rolling	396g	n/a	60tpi	Dual DNA	Tubeless Folding	34-622	17c - 25c	34/34	W010-0821
	34	TCS Light/Fast Rolling (tan)	394g	n/a	60tpi	Dual DNA	Tubeless Folding	34-622	17c - 25c	34/34	W010-0822
NEW	40	TCS Light/Fast Rolling SG2	463g	SG2	120tpi	Dual DNA	Tubeless Folding	40-622	17c - 29c	40/40	W010-0840
	40	TCS Light/Fast Rolling	426g	n/a	60tpi	Dual DNA	Tubeless Folding	40-622	17c - 29c	40/40	W010-0823
	40	TCS Light/Fast Rolling (tan)	415g	n/a	60tpi	Dual DNA	Tubeless Folding	40-622	17c - 29c	40/40	W010-0824
NEW	44	TCS Light/Fast Rolling SG2	525g	SG2	120tpi	Dual DNA	Tubeless Folding	44-622	17c - 32c	44/44	W010-0841
	44	TCS Light/Fast Rolling	499g	n/a	60tpi	Dual DNA	Tubeless Folding	44-622	17c - 32c	44/44	W010-0819
	44	TCS Light/Fast Rolling (tan)	479g	n/a	60tpi	Dual DNA	Tubeless Folding	44-622	17c - 32c	44/44	W010-0820

47

HORIZON**650****USAGES:** *Adventure Road***CONDITIONS:** *Pavement***TIRE DESCRIPTION**

Horizon brings supple plus-size traction and smooth riding characteristics beyond where the pavement ends. This high-volume 650b tire pairs an all-weather herringbone pattern with parallel grooves to improve cornering traction on crumbling tarmac and increase comfort on hardpack. The Horizon provides deceptively svelte performance on pavement, with resilience that isn't shaken by chasing confidants down dusty roads. The Horizon creates a new riding experience, regardless of where your exploits lead you.



Photo: Abner Kingman

NEW

WIDTH	LEVEL	WEIGHT	PUNCTURE PROTECTION	TPI	COMPOUND	BEAD	TIRE SIZE DESIGNATION	OPTIMAL INNER RIM WIDTH	GMS	PART #
650										
47	TCS Light/Fast Rolling SG2	TBD	SG2	120tpi	Dual DNA	Tubeless Folding	47-584	17c - 35c	47/47	W010-0842
47	TCS Light/Fast Rolling	532g	n/a	60tpi	Dual DNA	Tubeless Folding	47-584	17c - 35c	47/47	W010-0698
47	TCS Light/Fast Rolling (tan)	515g	n/a	60tpi	Dual DNA	Tubeless Folding	47-584	17c - 35c	47/47	W010-0640



42

RESOLUTE

650

700

USAGES: *Gravel • Cyclocross*

CONDITIONS: *Hardpack • Dirt • Gravel • Loose • Wet*

TIRE DESCRIPTION

Resolute is the ultimate all-weather gravel tire for those who don't want to fuss with conditions-specific tires for every season. Small, square knobs deliver consistent bite into a variety of terrain, while the ample spaces between them prevent packing up when conditions become fun (a.k.a wet). Truly all-season in nature, the Resolute's 42mm width makes it a set-it-and-forget-it gravel tire for endlessly undulating roads through all varieties of weather.



WIDTH	LEVEL	WEIGHT	PUNCTURE PROTECTION	TPI	COMPOUND	BEAD	TIRE SIZE DESIGNATION	OPTIMAL INNER RIM WIDTH	GMS	PART #
650										
NEW 42	TCS Light/Fast Rolling SG2	TBD	SG2	120tpi	Dual DNA	Tubeless Folding	42-584	17c - 31c	42/40	W010-0849
42	TCS Light/Fast Rolling (tan)	440g	n/a	60tpi	Dual DNA	Tubeless Folding	42-584	17c - 31c	42/40	W010-0682
700										
NEW 42	TCS Light/Fast Rolling SG2	TBD	SG2	120tpi	Dual DNA	Tubeless Folding	42-622	17c - 31c	42/40	W010-0848
42	TCS Light/Fast Rolling (tan)	460g	n/a	60tpi	Dual DNA	Tubeless Folding	42-622	17c - 31c	42/40	W010-0681



40

NANO**700****USAGES:** *Gravel • Cyclocross***CONDITIONS:** *Hardpack • Dirt • Gravel***TIRE DESCRIPTION**

Nano is built for speed. The nearly uninterrupted centerline provides swift efficiency on hardpack terrain while staggered outer knobs allow you to stay on the gas while hammering up chunky climbs or hanging on through loose gravel corners. The high-volume 40mm casing smooths out jarring gravel while also reducing drag and rolling resistance. This makes for an all-out gravel destroyer that still appeases those clamoring for a truly big cyclocross tire. Everybody's irrefutable favorite.



Photo: Aubrey Roper

WIDTH	LEVEL	WEIGHT	PUNCTURE PROTECTION	TPI	COMPOUND	BEAD	TIRE SIZE DESIGNATION	OPTIMAL INNER RIM WIDTH	GMS	PART #
700										
NEW 40	TCS Light/Fast Rolling SG2	TBD	SG2	120tpi	DNA	Tubeless Folding	40-622	17c - 29c	40/37	W010-0847
40	TCS Light/Fast Rolling	565g	n/a	60tpi	Dual DNA	Tubeless Folding	40-622	17c - 29c	40/36	W010-0578
40	TCS Light/Fast Rolling (tan)	497g	n/a	60tpi	Dual DNA	Tubeless Folding	40-622	17c - 29c	40/36	W010-0692
40	Comp	554g	n/a	30tpi	DNA	Wire	40-622	17c - 29c	40/36	W010-0523
40	Race	470g	n/a	60tpi	DNA	Tubeless Folding	40-622	17c - 29c	40/36	W010-0524



37 • 45

RIDDLER**700****USAGES:** *Gravel • Cyclocross***CONDITIONS:** *Pavement • Hardpack • Dirt • Gravel***TIRE DESCRIPTION**

Built for unfaltering speed through a wide range of conditions, the Riddler delivers swift efficiency for riders who value traction but still prioritize leading the pack at the end of a long ride. Looking for a gravel tread that keeps your legs on their game for hours on end while also accommodating longer dirt tours with ease? The Riddler is equally at home on your local cyclocross course or gravel B-road.



Photo: Aubrey Roper

WIDTH	LEVEL	WEIGHT	PUNCTURE PROTECTION	TPI	COMPOUND	BEAD	TIRE SIZE DESIGNATION	OPTIMAL INNER RIM WIDTH	GMS	PART #
700										
NEW 37	TCS Light/Fast Rolling SG2	TBD	SG2	120tpi	Dual DNA	Tubeless Folding	37-622	17c - 26c	37/38	W010-0852
37	TCS Light/Fast Rolling	468g	n/a	60tpi	Dual DNA	Tubeless Folding	37-622	17c - 26c	37/38	W010-0641
37	TCS Light/Fast Rolling (tan)	435g	n/a	60tpi	Dual DNA	Tubeless Folding	37-622	17c - 26c	37/38	W010-0694
NEW 45	TCS Light/Fast Rolling SG2	TBD	SG2	120tpi	Dual DNA	Tubeless Folding	44-622	17c - 32c	44/45	W010-0853
45	TCS Light/Fast Rolling	536g	n/a	60tpi	Dual DNA	Tubeless Folding	44-622	17c - 32c	44/45	W010-0642
45	TCS Light/Fast Rolling (tan)	488g	n/a	60tpi	Dual DNA	Tubeless Folding	44-622	17c - 32c	44/45	W010-0695



INTRO

TIRES

SADDLES

RIMS

GRIPS

ACCS.



RADDLER

700

USAGES: *Gravel • Cyclocross*

CONDITIONS: *Dirt • Gravel • Loose • Wet*

The radder version of WTB's famed Riddler tread pattern, the Raddler combines the supple traction of a high-volume gravel tire with the rolling efficiency of a short-knob tread design. The minimalistic centerline allows you to maximize the output of every pedal stroke, while toothy outer knobs provide cornering confidence that refuses to let up. The time-tested Raddler is an excellent choice for unpredictable roads or trails where traction is key, but efficiency is of utmost importance.

WIDTH	LEVEL	WEIGHT	PUNCTURE PROTECTION	TPI	COMPOUND	BEAD	TIRE SIZE DESIGNATION	OPTIMAL INNER RIM WIDTH	GMS	PART #
700										
NEW 40	TCS Light/Fast Rolling SG2	TBD	SG2	120tpi	Dual DNA	Tubeless Folding	40-622	17c - 29c	40/40	W010-0850
40	TCS Light/Fast Rolling	505g	n/a	60tpi	Dual DNA	Tubeless Folding	40-622	17c - 29c	40/40	W010-0829
40	TCS Light/Fast Rolling (tan)	490g	n/a	60tpi	Dual DNA	Tubeless Folding	40-622	17c - 29c	40/40	W010-0830
NEW 44	TCS Light/Fast Rolling SG2	TBD	SG2	120tpi	Dual DNA	Tubeless Folding	44-622	17c - 32c	44/42	W010-0851
44	TCS Light/Fast Rolling	526g	n/a	60tpi	Dual DNA	Tubeless Folding	44-622	17c - 32c	44/42	W010-0827
44	TCS Light/Fast Rolling (tan)	514g	n/a	60tpi	Dual DNA	Tubeless Folding	44-622	17c - 32c	44/42	W010-0828





CROSS BOSS

700

USAGES: *Gravel • Cyclocross*

CONDITIONS: *Hardpack • Dirt • Gravel*

TIRE DESCRIPTION

Cross Boss delivers the speed and consistency that keeps riders grinning for more turns, more sprints, and most importantly, more laps. Tightly spaced center knobs minimize rolling resistance while stepped intermediate knobs and widely spaced outer knobs help clear muck when the course turns into a slip 'n slide. From gravel pursuits to the cyclocross circuit, the Cross Boss is here to bring it.



Photo: Abner Kingman

WIDTH	LEVEL	WEIGHT	PUNCTURE PROTECTION	TPI	COMPOUND	BEAD	TIRE SIZE DESIGNATION	OPTIMAL INNER RIM WIDTH	GMS	PART #
700										
35	TCS Light/Fast Rolling	400g	n/a	60tpi	Dual DNA	Tubeless Folding	35-622	17c - 25c	35/30	W010-0564
35	TCS Light/Fast Rolling (tan)	400g	n/a	60tpi	Dual DNA	Tubeless Folding	35-622	17c - 25c	35/30	W010-0675



32

CROSSWOLF

700

USAGES: *Cyclocross*

CONDITIONS: *Gravel • Loose • Wet*

TIRE DESCRIPTION

Crosswolf attacks the race course with speed and an aggressive bite. Tall, boastful knobs deliver massive traction and stability for the tire's minimal weight and size, while ample spacing between knobs promotes mud evacuation. Sloppy outside? Fearing quicksand? Choose the Crosswolf.



Photo: Abner Kingman

WIDTH	LEVEL	WEIGHT	PUNCTURE PROTECTION	TPI	COMPOUND	BEAD	TIRE SIZE DESIGNATION	OPTIMAL INNER RIM WIDTH	GMS	PART #
700										
32	TCS Light/Fast Rolling	392g	n/a	60tpi	Dual DNA	Tubeless Folding	32-622	15c - 24c	32/32	W010-0535

MOUNTAIN





VERDICT

27.5"

29"

USAGES: *Enduro • Gravity*

CONDITIONS: *Dry • Wet • Loose • Rocky • Mud*

TIRE DESCRIPTION

The Verdict is our most aggressive front-focused tire. The tire of choice when relentless traction takes priority over rolling efficiency. Designed to dig in every way, the flat profile of the Verdict keeps chunky outer knobs shoveling at all times. Paired to a substantial intermediate channel, this ensures numerous knob edges are biting into the trail while beginning to lean or fully in it. Abundant open space between all knobs allows the Verdict to dig through the driest days of summer and fling mud in the wettest months of spring. The Verdict is guilty of holding it down through off-camber corners and chundery descents.



Photo: Sven Martin

	WIDTH	LEVEL	WEIGHT	PUNCTURE PROTECTION	TPI	COMPOUND	BEAD	TIRE SIZE DESIGNATION	OPTIMAL INNER RIM WIDTH	GMS	PART #
27.5"											
NEW	2.5	TCS Light/High Grip SG2	TBD	SG2	60tpi	TriTec	Tubeless Folding	60-584	19 - 45mm	60/64	W010-0901
NEW	2.5	TCS Light/High Grip SG3	TBD	SG3	60tpi	TriTec	Tubeless Folding	60-584	19 - 45mm	60/64	W010-0902
NEW	2.5	TCS Tough/Fast Rolling SG1 E25	TBD	SG1	60tpi	TriTec	Tubeless Folding	60-584	19 - 45mm	60/64	W010-0904
	2.5	TCS Tough/High Grip E25	TBD	n/a	60tpi	TriTec	Tubeless Folding	60-584	19 - 45mm	60/64	W010-0903
29"											
NEW	2.5	TCS Light/High Grip SG2	TBD	SG2	60tpi	TriTec	Tubeless Folding	60-622	19 - 45mm	60/64	W010-0905
NEW	2.5	TCS Light/High Grip SG3	TBD	SG3	60tpi	TriTec	Tubeless Folding	60-622	19 - 45mm	60/64	W010-0906
NEW	2.5	TCS Tough/Fast Rolling SG1 E25	TBD	SG1	60tpi	TriTec	Tubeless Folding	60-622	19 - 45mm	60/64	W010-0908
	2.5	TCS Tough/High Grip E25	TBD	n/a	60tpi	TriTec	Tubeless Folding	60-622	19 - 45mm	60/64	W010-0907



2.5

VERDICT WET**27.5"****29"****USAGES:** *Enduro • Gravity***CONDITIONS:** *Wet • Loose • Mud***TIRE DESCRIPTION**

Verdict Wet sinks its teeth in on the rowdiest days of the season. Days when you're embracing the slop and chewing on mud. Massive knobs punch through muck and find traction in the trail below. The generous intermediate channel leaves the outer knobs uninhibited with their digging, while substantial spacing throughout ensures the Verdict Wet sheds mud as well as it tames it. Choose Verdict Wet when only the tallest knobs will you keep you upright.



Photo: Abner Kingman

	WIDTH	LEVEL	WEIGHT	PUNCTURE PROTECTION	TPI	COMPOUND	BEAD	TIRE SIZE DESIGNATION	OPTIMAL INNER RIM WIDTH	GMS	PART #
27.5"											
NEW	2.5	TCS Light/High Grip SG3	TBD	SG3	60tpi	TriTec	Tubeless Folding	60-584	19 - 45mm	60/64	W010-0935
29"											
NEW	2.5	TCS Light/High Grip SG3	TBD	SG3	60tpi	TriTec	Tubeless Folding	60-622	19 - 45mm	60/64	W010-0936



INTRO

TIRES

SADDLES

RIMS

GRIPS

ACCS.



VIGILANTE

26"	27.5"	29"
-----	-------	-----

USAGES: *Trail • Enduro*

CONDITIONS: *Dirt • Loose • Rocky • Wet*

TIRE DESCRIPTION

Aggressive, premier, and unwavering...those were all words we used to describe the original, highly esteemed Vigilante 2.3 and they still ring true for all these widths of the updated Vigilante tread. Square-lugged knobs still deliver unwavering traction, yet with added height to ensure they dig even deeper into loose, unpredictable terrain. Increased circumferential spacing allows the tread to remain clear through wet conditions, while still keeping the casing protected from spiteful rocks.



Photo: Sven Martin



Photo: Sven Martin

	WIDTH	LEVEL	WEIGHT	PUNCTURE PROTECTION	TPI	COMPOUND	BEAD	TIRE SIZE DESIGNATION	OPTIMAL INNER RIM WIDTH	GMS	PART #
26"											
NEW	2.3	TCS Light/Fast Rolling SG3	TBD	SG3	60tpi	TriTec	Tubeless Folding	57-559	25 - 35mm	57/57	W010-0910
	2.3	Comp	TBD	SG3	30tpi	DNA	Wirebead	57-559	25 - 35mm	57/57	W010-0536
27.5"											
NEW	2.3	TCS Light/Fast Rolling SG2 (tan)	TBD	SG2	60tpi	Dual DNA	Tubeless Folding	57-584	25 - 35mm	57/57	W010-0911
NEW	2.3	TCS Light/Fast Rolling SG3	TBD	SG3	60tpi	TriTec	Tubeless Folding	57-584	25 - 35mm	57/57	W010-0912
NEW	2.3	TCS Light/High Grip SG3	TBD	SG3	60tpi	TriTec	Tubeless Folding	57-584	25 - 35mm	57/57	W010-0913
NEW	2.5	TCS Light/High Grip SG2	TBD	SG2	60tpi	TriTec	Tubeless Folding	60-584	25 - 35mm	60/64	W010-0917
NEW	2.5	TCS Light/High Grip SG2 (tan)	TBD	SG2	60tpi	Dual DNA	Tubeless Folding	60-584	25 - 35mm	60/64	W010-0918
NEW	2.5	TCS Light/High Grip SG5	TBD	SG5	60tpi	TriTec	Tubeless Folding	60-584	25 - 35mm	60/64	W010-0919
NEW	2.5	TCS Tough/Fast Rolling SG1 E25	TBD	SG1	60tpi	TriTec	Tubeless Folding	60-584	25 - 35mm	60/64	W010-0921
	2.5	TCS Tough/High Grip E25	TBD	n/a	60tpi	TriTec	Tubeless Folding	60-584	25 - 35mm	60/64	W010-0920
NEW	2.6	TCS Light/High Grip SG2	TBD	SG2	60tpi	TriTec	Tubeless Folding	65-584	29 - 40mm	62/66	W010-0927
NEW	2.6	TCS Tough/Fast Rolling SG1 E25	TBD	SG1	60tpi	TriTec	Tubeless Folding	65-584	29 - 40mm	62/66	W010-0929
	2.6	TCS Tough/High Grip E25	TBD	n/a	60tpi	TriTec	Tubeless Folding	65-584	29 - 40mm	62/66	W010-0928
NEW	2.8	TCS Light/High Grip SG5	TBD	SG5	60tpi	TriTec	Tubeless Folding	67-584	35 - 45mm	67/71	W010-0933
29"											
NEW	2.3	TCS Light/Fast Rolling SG2 (tan)	TBD	SG2	60tpi	Dual DNA	Tubeless Folding	57-622	25 - 35mm	57/57	W010-0914
NEW	2.3	TCS Light/Fast Rolling SG3	TBD	SG3	60tpi	TriTec	Tubeless Folding	57-622	25 - 35mm	57/57	W010-0915
NEW	2.3	TCS Light/High Grip SG3	TBD	SG3	60tpi	TriTec	Tubeless Folding	57-622	25 - 35mm	57/57	W010-0916
NEW	2.5	TCS Light/High Grip SG2	TBD	SG2	60tpi	TriTec	Tubeless Folding	60-622	25 - 35mm	60/64	W010-0922
NEW	2.5	TCS Light/High Grip SG2 (tan)	TBD	SG2	60tpi	Dual DNA	Tubeless Folding	60-622	25 - 35mm	60/64	W010-0923
NEW	2.5	TCS Light/High Grip SG5	TBD	SG5	60tpi	TriTec	Tubeless Folding	60-622	25 - 35mm	60/64	W010-0924
NEW	2.5	TCS Tough/Fast Rolling SG1 E25	TBD	SG1	60tpi	TriTec	Tubeless Folding	60-622	25 - 35mm	60/64	W010-0926
	2.5	TCS Tough/High Grip E25	TBD	n/a	60tpi	TriTec	Tubeless Folding	60-622	25 - 35mm	60/64	W010-0925
NEW	2.6	TCS Light/High Grip SG2	TBD	SG2	60tpi	TriTec	Tubeless Folding	65-622	29 - 40mm	62/66	W010-0930
NEW	2.6	TCS Tough/Fast Rolling SG1 E25	TBD	SG1	60tpi	TriTec	Tubeless Folding	65-622	29 - 40mm	62/66	W010-0932
	2.6	TCS Tough/High Grip E25	TBD	n/a	60tpi	TriTec	Tubeless Folding	65-622	29 - 40mm	62/66	W010-0931
NEW	2.8	TCS Light/High Grip SG5	TBD	SG5	60tpi	TriTec	Tubeless Folding	67-622	35 - 45mm	67/71	W010-0934



TRAIL BOSS

26"

27.5"

29"

USAGES: *Cross Country (2.25) • Trail • Enduro*

2.25 CONDITIONS: *Loose Over Hard • Dirt • Loose • Rocky*

2.4 & 2.6 CONDITIONS: *Loose Over Hard • Dirt • Loose • Rocky*

TIRE DESCRIPTION

It's a tall order to improve the tried-and-true Trail Boss tire, but we promise that's exactly what we've done. The new Trail Boss builds on perfection with a more aggressive tread pattern to match its increased volume. Generous spacing between sizable knobs provides better traction in loose or wet conditions, while staying true to its fleet-footed heritage. Large, supportive side knobs dig deeeeeeeep, whether you're leaning into a corner or grabbing a handful of brake. Most often used as a rear tire, the Trail Boss G2 also provides plentiful traction on hardpack trails when used on the front.





Photo: Caleb Smith

	WIDTH	LEVEL	WEIGHT	PUNCTURE PROTECTION	TPI	COMPOUND	BEAD	TIRE SIZE DESIGNATION	OPTIMAL INNER RIM WIDTH	GMS	PART #
26"											
NEW	2.25	Comp	670g	n/a	30tpi	DNA	Wire	54-559	19c - 38c	54/57	W010-0595
27.5"											
NEW	2.25	Comp	891g	n/a	30tpi	DNA	Wire	54-584	19c - 38c	54/57	W010-0551
NEW	2.4	TCS Light/Fast Rolling SG5	TBD	SG5	60tpi	TriTec	Tubeless Folding	55-584	25 - 35mm	57/60	W010-0890
NEW	2.4	TCS Light/Fast Rolling SG2 (tan)	TBD	SG2	60tpi	Dual DNA	Tubeless Folding	55-584	25 - 35mm	57/60	W010-0889
	2.4	TCS Tough/Fast Rolling E25	TBD	n/a	60tpi	TriTec	Tubeless Folding	55-584	25 - 35mm	57/60	W010-0891
NEW	2.6	TCS Light/Fast Rolling SG2	TBD	SG2	60tpi	TriTec	Tubeless Folding	65-584	29 - 40mm	62/66	W010-0895
	2.6	TCS Tough/Fast Rolling E25	TBD	n/a	60tpi	TriTec	Tubeless Folding	65-584	29 - 40mm	62/66	W010-0896
29"											
NEW	2.25	Comp	914g	n/a	30tpi	DNA	Wire	54-622	19c - 38c	54/57	W010-0522
NEW	2.25	TCS Light/Fast Rolling SG2	TBD	SG2	60tpi	TriTec	Tubeless Folding	54-622	19 - 29mm	54/57	W010-0887
NEW	2.25	TCS Light/Fast Rolling SG2 (tan)	TBD	SG2	60tpi	Dual DNA	Tubeless Folding	54-622	19 - 29mm	54/57	W010-0886
NEW	2.25	TCS Light/Fast Rolling SG5	TBD	SG5	60tpi	TriTec	Tubeless Folding	54-622	19 - 29mm	54/57	W010-0888
NEW	2.4	TCS Light/Fast Rolling SG2 (tan)	TBD	SG2	60tpi	Dual DNA	Tubeless Folding	55-622	25 - 35mm	57/60	W010-0892
NEW	2.4	TCS Light/Fast Rolling SG5	TBD	SG5	60tpi	TriTec	Tubeless Folding	55-622	25 - 35mm	57/60	W010-0893
	2.4	TCS Tough/Fast Rolling E25	TBD	n/a	60tpi	TriTec	Tubeless Folding	55-622	25 - 35mm	57/60	W010-0894
NEW	2.6	TCS Light/Fast Rolling SG2	TBD	SG2	60tpi	TriTec	Tubeless Folding	65-622	29 - 40mm	62/66	W010-0897
	2.6	TCS Tough/Fast Rolling E25	TBD	n/a	60tpi	TriTec	Tubeless Folding	65-622	29 - 40mm	62/66	W010-0898

INTRO

TIRES

SADDLES

RIMS

GRIPS

ACCS.



JUDGE

27.5"

29"

USAGES: *Enduro • Gravity*

CONDITIONS: *Dirt • Loose • Rocky • Wet*

TIRE DESCRIPTION

The Judge is our rowdiest rear-focused tire...for loose, sketchy descents. Centerline knob groups alternate between long and wide to pair hard braking traction with the rolling efficiency you demand of a rear tire. Burly outer knobs provide support to keep them digging while slapping berms or spraying loam. We optimized the Judge for wide rims to provide a flatter tire profile that makes the outer knobs easy to find while cornering. The Judge keeps everything in order, whether dry and loose or wet and sloppy.



Photo: Andy Lloyd

WIDTH	LEVEL	WEIGHT	PUNCTURE PROTECTION	TPI	COMPOUND	BEAD	TIRE SIZE DESIGNATION	OPTIMAL INNER RIM WIDTH	GMS	PART #
27.5"										
2.4	TCS Tough/High Grip E25 tire	TBD	n/a	60tpi	TriTec	Tubeless Folding	55-584	25 - 35mm	55/60	W010-0854
29"										
2.4	TCS Tough/High Grip E25 tire	TBD	n/a	60tpi	TriTec	Tubeless Folding	55-622	25 - 35mm	55/60	W010-0855





INTRO

TIRES

SADDLES

RIMS

GRIPS

ACCS.



RANGER

26"

27.5"

29"

USAGES: *Cross-Country • Trail • Bikepacking*

CONDITIONS: *Hardpack • Loose Over Hard • Dirt • Wet*

TIRE DESCRIPTION

Searching for the ultimate do-all tire? Meet the Ranger... bikepacker approved, trail ready. Weight optimized to outperform in all environments and excel on longer rides. Dry to wet, hardpack or loam, the Ranger isn't intimidated.



Photo: Abner Kingman



Photo: Clayton Wangbichler

	WIDTH	LEVEL	WEIGHT	PUNCTURE PROTECTION	TPI	COMPOUND	BEAD	TIRE SIZE DESIGNATION	OPTIMAL INNER RIM WIDTH	GMS	PART #
26"											
NEW	2.8	TCS Light/Fast Rolling SG3	TBD	SG3	60tpi	TriTec	Tubeless Folding	67-559	35 - 45mm	67/71	W010-0880
27.5"											
NEW	2.8	TCS Light/Fast Rolling SG3	TBD	SG3	60tpi	TriTec	Tubeless Folding	67-584	35 - 45mm	67/71	W010-0881
29"											
NEW	2.25	TCS Light/Fast Rolling SG2	TBD	SG2	120tpi	Dual DNA	Tubeless Folding	55-622	25 - 35mm	55/57	W010-0877
NEW	2.25	TCS Light/Fast Rolling	TBD	n/a	60tpi	Dual DNA	Tubeless Folding	55-622	25 - 35mm	55/57	W010-0875
NEW	2.25	TCS Light/Fast Rolling SG2 (tan)	TBD	SG2	60tpi	Dual DNA	Tubeless Folding	55-622	25 - 35mm	55/57	W010-0876
NEW	2.4	TCS Light/Fast Rolling SG2	TBD	SG2	60tpi	TriTec	Tubeless Folding	55-622	25 - 35mm	59/61	W010-0879
NEW	2.4	TCS Light/Fast Rolling SG2 (tan)	TBD	SG2	60tpi	Dual DNA	Tubeless Folding	55-622	25 - 35mm	59/61	W010-0878
NEW	3.0	TCS Light/Fast Rolling SG3	TBD	SG3	60tpi	TriTec	Tubeless Folding	72-622	35 - 45mm	75/76	W010-0882



2.1

NANO

29"

USAGES: *Cross-Country • Trail*

CONDITIONS: *Hardpack • Loose Over Hard • Dirt*

TIRE DESCRIPTION

This is the #1 tire choice for Tour Divide, the longest mountain bike race in the world, stretching from Canada to Mexico along the Rockies. An iconic tread design paired with proven tubeless technology come together as one solid tire that will go the distance.



WIDTH	LEVEL	WEIGHT	PUNCTURE PROTECTION	TPI	COMPOUND	BEAD	TIRE SIZE DESIGNATION	OPTIMAL INNER RIM WIDTH	GMS	PART #
29"										
NEW	2.1	TCS Light/Fast Rolling SG2	TBD	SG2	120tpi	Dual DNA	Tubeless Folding	54-622	19 - 25mm	52/50 W010-0861
NEW	2.1	TCS Light/Fast Rolling SG2 (tan)	TBD	SG2	60tpi	Dual DNA	Tubeless Folding	54-622	19 - 25mm	52/50 W010-0860
	2.1	TCS Light/Fast Rolling	685g	n/a	60tpi	Dual DNA	Tubeless Folding	54-622	19 - 25mm	52/50 W010-0859



NINE LINE

29"

USAGES: *Cross-Country • Trail*

CONDITIONS: *Hardpack • Loose Over Hard • Dirt*

TIRE DESCRIPTION

Fast rolling with pared down, consistent micro blocks that boast remarkable lateral traction and effortless rolling speed. A rounded profile and healthy dosing of working edges provide predictability while a 2.25 offering makes for an easy transition from the short track to the single track.



WIDTH	LEVEL	WEIGHT	PUNCTURE PROTECTION	TPI	COMPOUND	BEAD	TIRE SIZE DESIGNATION	OPTIMAL INNER RIM WIDTH	GMS	PART #
29"										
NEW 2.25	TCS Light/Fast Rolling SG2	TBD	SG2	120tpi	Dual DNA	Tubeless Folding	54-622	20 - 25mm	54/52	W010-0864
NEW 2.25	TCS Light/Fast Rolling SG2 (tan)	TBD	SG2	60tpi	Dual DNA	Tubeless Folding	54-622	20 - 25mm	54/52	W010-0863
2.25	TCS Light/Fast Rolling	755g	n/a	60tpi	Dual DNA	Tubeless Folding	54-622	20 - 25mm	54/52	W010-0862



FRONT
2.1



REAR
2.1



VELOCIRAPTOR

26"

USAGES: *Cross-Country • Trail*

CONDITIONS: *Dirt • Loose • Rocky • Wet • Mud*

TIRE DESCRIPTION

At a time when mountain bike tires were unquestionably gum walled, the VelociRaptors came out in black and haven't looked back ever since. They changed the game in 1994 with a steering specific front and a rear that could really dig. The VelociRaptors continue to be popular because, to put it simply, they just work. Try riding one of the most classic combos of all time.



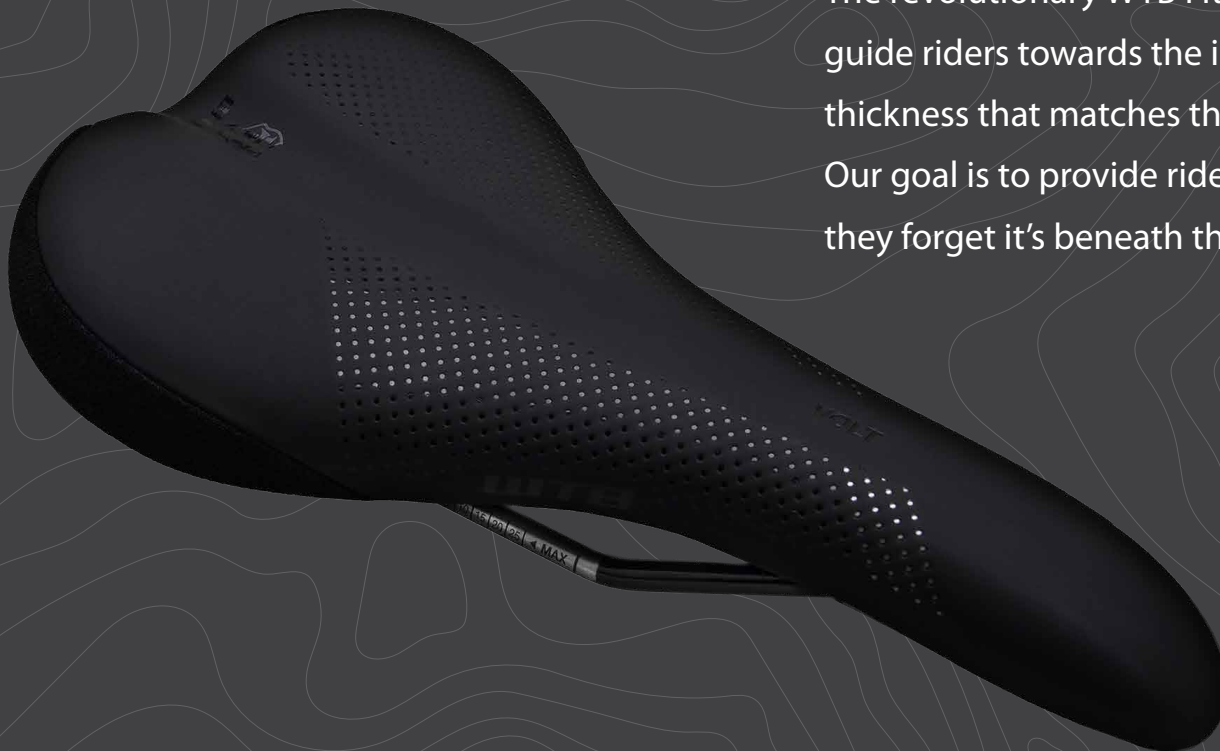
WIDTH	LEVEL	WEIGHT	PUNCTURE PROTECTION	TPI	COMPOUND	BEAD	TIRE SIZE DESIGNATION	OPTIMAL INNER RIM WIDTH	GMS	PART #
29"										
2.1	Comp	829g	n/a	30tpi	DNA	Wire	52-559	17c - 36c	47/52	W010-0101
2.1	Comp	829g	n/a	30tpi	DNA	Wire	52-559	17c - 36c	47/52	W010-0102






SADDLES

FIND YOUR PERFECT SADDLE

Gone are the days of sitting on mediocrity. Accompanied by new graphics, WTB now offers a complete line of saddles covering a full range of widths and padding thicknesses. However, even the most comfortable saddles require a fit procedure to ensure riders end up on their ideal saddle. The revolutionary WTB Fit Right System uses simple steps to guide riders towards the ideal saddle width and padding thickness that matches their physiology and riding position. Our goal is to provide riders with a saddle that fits so perfectly they forget it's beneath them.



The WTB Fit Right Chart categorizes our entire saddle line using the simple descriptors of saddle width and padding thickness. WTB saddles are available in a breadth of levels that equally satisfy the meticulous needs of gram-conscious racers as much as the comfort concerns of casual weekend warriors, ensuring that every rider of every discipline finds the perfect WTB saddle. This chart is also the final step of our Fit Right System, where a rider's individual biometrics and riding position are used to determine which saddle is right for them.

<div>FIT RIGHT</div> <div>CHART</div>	<div>NARROW</div> <div>WIDTH</div>	<div>MEDIUM</div> <div>WIDTH</div>	<div>WIDE</div> <div>WIDTH</div>
SIT BONE RANGE	70-100mm	100-130mm	130-160mm
<div></div> <div>THIN</div> <div>PADDING</div>	SL8 NARROW SILVERADO NARROW	SL8 MEDIUM SILVERADO MEDIUM	SL8 WIDE
<div></div> <div>MEDIUM</div> <div>PADDING</div>	VOLT NARROW	VOLT MEDIUM KODA MEDIUM DEVA MEDIUM	VOLT WIDE KODA WIDE
<div></div> <div>THICK</div> <div>PADDING</div>	ROCKET NARROW	ROCKET MEDIUM SPEED MEDIUM PURE MEDIUM	SPEED SHE WIDE ROCKET WIDE COMFORT WIDE

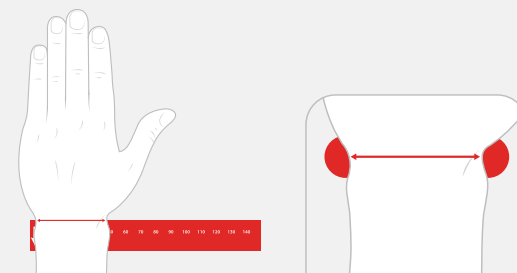


STEP 1

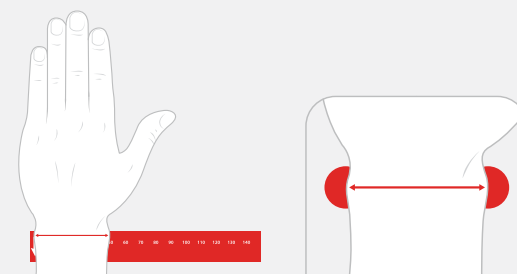
WHAT IS YOUR WRIST MEASUREMENT?

To measure your wrist width, lay your arm flat on a metric ruler. Metric calipers also work and often provide better results.

** Males and females measure different areas of the wrist.
Select your gender and follow the corresponding instructions*

**BORN MALE****MALE WRIST MEASUREMENT**

Males measure at the narrowest point of the wrist, just before the palm.

**BORN FEMALE****FEMALE WRIST MEASUREMENT**

Females measure at the widest point, where wrist bones are most prominent.

FIT RIGHT SYSTEM**PERSONALIZED SADDLE FIT****FIT RIGHT SYSTEM DESCRIPTION**

The WTB Fit Right System uses a simple method to determine personalized saddle fit. Based on your individual biometrics and riding position, we calculate your sit bone measurement and match it to our complete range of saddle widths and padding thickness options.

**FIND YOUR
FIT AT:**

www.wtb.com/fitright

STEP 2

SELECT YOUR RIDING POSITION

Select the riding position that best matches your preferred riding style.


LEISURE

Relaxed and upright.


PERFORMANCE

Active movement on varied terrain.

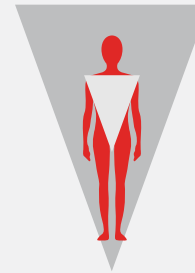

AGGRESSIVE

Intense output and endurance racing.

STEP 3

SELECT YOUR BODY SHAPE

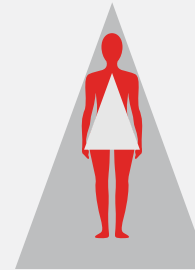
Select the body shape that best matches your body type.


INVERTED TRIANGLE

Broader shoulders and chest compared to hips.


RECTANGLE

Shoulders and hips share similar measurements.


TRIANGLE

Hip measurement greater than shoulder and chest measurement.


HOURLASS

Hip and chest measurements nearly equal in size, with narrower waist.

INTRO

TIRES

SADDLES

RIMS

GRIPS

ACCS.

SADDLE LEVEL RAIL MATERIAL	PADDING MATERIAL	COVER MATERIAL	SHELL MATERIAL
Carbon	DNA	Microfiber	Flex-Tuned
Titanium	DNA	Microfiber	Flex-Tuned
Cromoly	HLX	Microfiber	Flex-Tuned
Cromoly	HLX + Gel	Microfiber	Flex-Tuned
Steel	DNAX	Microfiber	Flex-Tuned

TECHNOLOGY

LOVE CHANNEL®

Found on all WTB saddles, the Love Channel has one very important task: protecting your body from unwanted pressure. The central depression provides soft-tissue relief without sacrificing the structural integrity of the saddle.

COMFORT ZONE®

Featured exclusively on high-end WTB saddles, these small windows are cut away from the base of the saddle to provide additional relief from pressure on sensitive areas. Comfort Zone is a subtle difference that provides impressive long-term comfort.

RAILS

We offer four different saddle rail materials that provide various levels of weight, durability, flex and cost. The range of materials allows racers to choose carbon saddle rails for a lightweight advantage, while urban commuters may choose our steel rails to provide lasting durability at an affordable cost.

CARBON

Top-tier performance and ultimate weight savings for gram-conscious riders. These rails are designed to provide optimal support at a minimal weight.

TITANIUM

Nearly as light as carbon, titanium rails are able to flex without losing structural integrity, making it a great material for saddle rails.

CROMOLY

Increased strength and less weight make cromoly steel a noticeable upgrade over traditional steel rails. The perfect choice for bikepackers.

STEEL

Our entry-level saddles utilize strong and reliable steel rails to provide lasting comfort and durability at an affordable price.

PADDING

SADDLE PADDING

Different padding materials offer varying levels of weight, comfort and durability. Some materials are designed to provide comfort for a quick commute to work, while others are specifically tuned to provide lasting comfort throughout an all-day ride.

DNA

Superlight polyurethane provides a dense padding that dramatically reduces saddle weight and provides our ultimate level of support. DNA padding holds its shape incredibly well over long rides as well as throughout the lifetime of the saddle, providing unbeatable comfort on long rides and durability in the years to come.

HLX

30% more shock absorbent than polyurethane, HLX padding is plusher than our DNA padding. It's a great option for those you prioritize squishiness rather than weight savings. Wish your memory foam mattress topper could be transformed into a saddle? Look no further than our HLX padding.

HLX + Gel

Identical to our HLX padding, with the added comfort of strategically placed gel inserts in the areas where sit bones contact the saddle. Gel inserts provide additional support to prevent the

pinching of soft tissues while also cradling the sit bones in a comfortable position on the saddle.

DNAx

Soft to the touch, this lightweight polyurethane padding is a great option for anyone experiencing sore contact points on their saddle. Ideal for rides of shorter duration.

MATERIALS

Saddles need to be supportive and comfortable, but there's more to it than that. The usage of a variety of materials in different areas of the saddle design allow us to provide durability where it is needed most, while ensuring supple comfort in areas that directly contact the rider.

MICROFIBER COVER

Found on all WTB saddles, our Microfiber cover closely replicates the look and feel of a leather cover. The supple nature of the Microfiber Cover allows the foam to support the sit bones without interfering with its resiliency.

ABR CORNERS

These durable patches of material protect the corners and sides of the saddle from rips and tears.

SHELLS

SADDLE SHELL

The saddle shell provides a supportive foundation for the foam padding to sit on, while also providing an attachment point for the cover. The material of the shell determines the amount a saddle can flex and therefore affects the overall comfort characteristics.

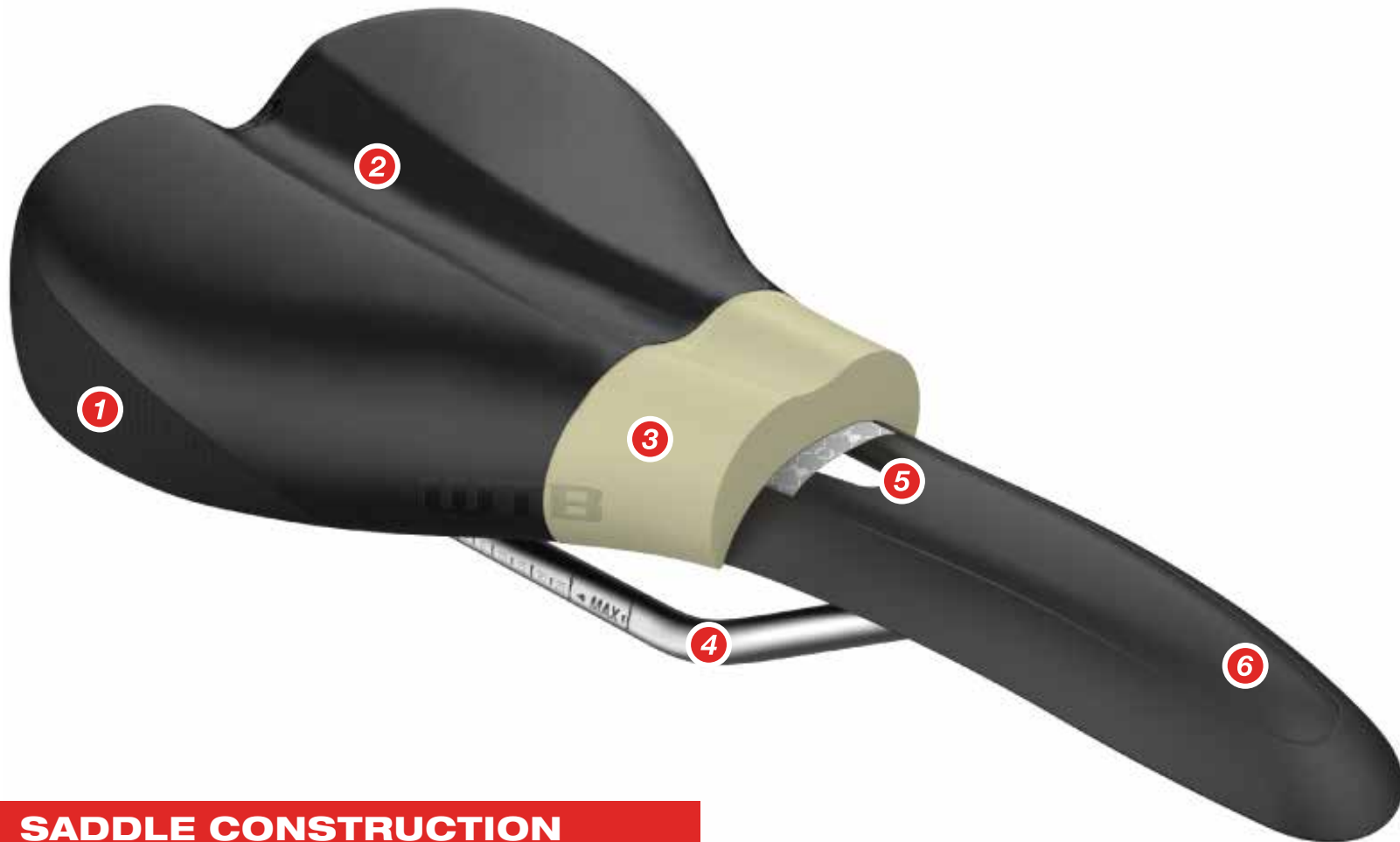
FLEX-TUNED SHELL

The Flex-Tuned shell boasts an exceptional mix of comfortable flex and firm efficiency. Not as supple as the Soft-Shell and not as stiff as the Carbon Composite Shell, Flex-Tuned saddles provide the happy medium that is ideal for most enthusiasts.

SOFT-SHELL

Shock-absorbing, dual-compound saddle base. Soft-Shell saddles minimize trail vibration while providing a rigid platform for efficient pedaling.

**Only available on Speed saddles*



SADDLE CONSTRUCTION

FEATURES:

- | | | | |
|---|--------------|---|--------------|
| 1 | ABR CORNERS | 4 | RAIL |
| 2 | LOVE CHANNEL | 5 | COMFORT ZONE |
| 3 | PADDING | 6 | SHELL |

TRY BEFORE YOU BUY

BECAUSE GOING ON A RIDE IS THE ULTIMATE TEST

Saddles are highly personal items. The ultimate saddle for one rider could be awkward and uncomfortable for another. The only way to determine if a saddle fits your personal anatomy is to actually ride it. With the Test Ride Program, you get that opportunity. Now, through participating bike shops, you can ride WTB's most popular saddle shapes and find the best fit before you committing to buying.



TEST RIDE



SILVERADO

NARROW

MEDIUM

DIMENSIONS: 135 & 142 x 280mm

PADDING: *Thin*

SADDLE DESCRIPTION

The Silverado is one of WTB's most iconic and revered saddle shapes. Lightweight and slim, the design oozes speed while proving to be incredibly comfortable. Ride a Silverado and you'll quickly know what everyone's raving about.



LEVEL	SIT BONE RANGE	DIMENSIONS	PADDING THICKNESS	RAIL MATERIAL	PADDING MATERIAL	COVER MATERIAL	SHELL MATERIAL	WEIGHT	PART #
SILVERADO									
NARROW WIDTH									
Carbon	70-100mm	135 x 280mm	Thin	Carbon	DNA	Microfiber	Flex-Tuned	176g	W065-0574
Titanium	70-100mm	135 x 280mm	Thin	Titanium	DNA	Microfiber	Flex-Tuned	200g	W065-0575
Cromoly	70-100mm	135 x 280mm	Thin	Cromoly	HLX	Microfiber	Flex-Tuned	265g	W065-0576
Steel	70-100mm	135 x 280mm	Thin	Steel	DNAx	Microfiber	Flex-Tuned	295g	W065-0577
MEDIUM WIDTH									
Carbon	100-130mm	142 x 280mm	Thin	Carbon	DNA	Microfiber	Flex-Tuned	181g	W065-0628
Titanium	100-130mm	142 x 280mm	Thin	Titanium	DNA	Microfiber	Flex-Tuned	204g	W065-0578
Cromoly	100-130mm	142 x 280mm	Thin	Cromoly	HLX	Microfiber	Flex-Tuned	270g	W065-0579
Steel	100-130mm	142 x 280mm	Thin	Steel	DNAx	Microfiber	Flex-Tuned	310g	W065-0580



VOLT

NARROW

MEDIUM

WIDE

DIMENSIONS: 135, 142 & 150 x 265mm

PADDING: *Medium*

SADDLE DESCRIPTION

The Volt is our most popular mountain saddle. Shaped for speed and comfort, time tested and proven, the Volt makes for an incredibly versatile saddle that has gained endless acclaim among riders.

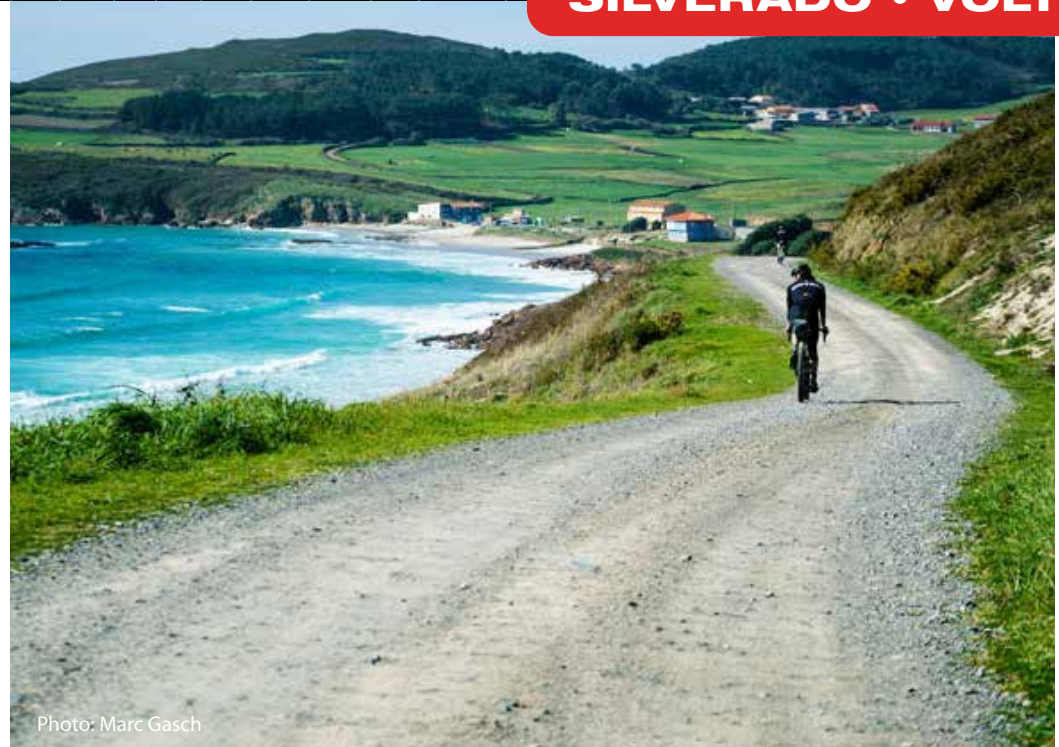


Photo: Marc Gasch

LEVEL	SIT BONE RANGE	DIMENSIONS	PADDING THICKNESS	RAIL MATERIAL	PADDING MATERIAL	COVER MATERIAL	SHELL MATERIAL	WEIGHT	PART #
VOLT									
NARROW WIDTH									
Carbon	70-100mm	135 x 265mm	Medium	Carbon	DNA	Microfiber	Flex-Tuned	165g	W065-0581
Titanium	70-100mm	135 x 265mm	Medium	Titanium	DNA	Microfiber	Flex-Tuned	208g	W065-0582
Cromoly	70-100mm	135 x 265mm	Medium	Cromoly	HLX + Gel	Microfiber	Flex-Tuned	290g	W065-0583
Steel	70-100mm	135 x 265mm	Medium	Steel	DNAX	Microfiber	Flex-Tuned	292g	W065-0584
MEDIUM WIDTH									
Titanium	100-130mm	142 x 265mm	Medium	Titanium	DNA	Microfiber	Flex-Tuned	225g	W065-0585
Cromoly	100-130mm	142 x 265mm	Medium	Cromoly	HLX + Gel	Microfiber	Flex-Tuned	310g	W065-0586
Steel	100-130mm	142 x 265mm	Medium	Steel	DNAX	Microfiber	Flex-Tuned	315g	W065-0587
WIDE WIDTH									
Titanium	130-160mm	150 x 265mm	Medium	Titanium	DNA	Microfiber	Flex-Tuned	230g	W065-0588
Cromoly	130-160mm	150 x 265mm	Medium	Cromoly	HLX + Gel	Microfiber	Flex-Tuned	315g	W065-0589
Steel	130-160mm	150 x 265mm	Medium	Steel	DNAX	Microfiber	Flex-Tuned	320g	W065-0590



ROCKET

NARROW

MEDIUM

WIDE

DIMENSIONS: 130, 142 & 150 x 265mm

PADDING: *Thick*

SADDLE DESCRIPTION

The Rocket is an incredibly versatile saddle. From a two minute hair-raising downhill to a 2700 mile individual time trial, this saddle is the top choice for those pushing the sport.



LEVEL	SIT BONE RANGE	DIMENSIONS	PADDING THICKNESS	RAIL MATERIAL	PADDING MATERIAL	COVER MATERIAL	SHELL MATERIAL	WEIGHT	PART #
ROCKET									
NARROW WIDTH									
Titanium	70-100mm	130 x 265mm	Thick	Titanium	DNA	Microfiber	Flex-Tuned	210g	W065-0591
MEDIUM WIDTH									
Titanium	100-130mm	142 x 265mm	Thick	Titanium	DNA	Microfiber	Flex-Tuned	215g	W065-0592
Cromoly	100-130mm	142 x 265mm	Thick	Cromoly	HLX	Microfiber	Flex-Tuned	306g	W065-0593
Steel	100-130mm	142 x 265mm	Thick	Steel	DNAx	Microfiber	Flex-Tuned	318g	W065-0594
WIDE WIDTH									
Titanium	130-160mm	150 x 265mm	Thick	Titanium	DNA	Microfiber	Flex-Tuned	224g	W065-0595
Cromoly	130-160mm	150 x 265mm	Thick	Cromoly	HLX	Microfiber	Flex-Tuned	316g	W065-0596
Steel	130-160mm	150 x 265mm	Thick	Steel	DNAx	Microfiber	Flex-Tuned	330g	W065-0597







SL8

NARROW

MEDIUM

WIDE

DIMENSIONS: 127, 142 & 150 x 265mm

PADDING: *Thin*

SADDLE DESCRIPTION

Elegant, slight curves accentuate this inviting shape that redefines what comfort is capable of at such a low weight. From where the pavement ends, to B-road pursuits and cyclocross run-ups, our SL8 saddle provides irrefutable comfort in a minimalist, svelte package.



LEVEL	SIT BONE RANGE	DIMENSIONS	PADDING THICKNESS	RAIL MATERIAL	PADDING MATERIAL	COVER MATERIAL	SHELL MATERIAL	WEIGHT	PART #
SL8									
NARROW WIDTH									
Carbon	70-100mm	127 x 265mm	Thin	Carbon	DNA	Microfiber	Flex-Tuned	155g	W065-0598
Titanium	70-100mm	127 x 265mm	Thin	Titanium	DNA	Microfiber	Flex-Tuned	193g	W065-0599
Cromoly	70-100mm	127 x 265mm	Thin	Cromoly	HLX	Microfiber	Flex-Tuned	261g	W065-0600
MEDIUM WIDTH									
Titanium	100-130mm	142 x 265mm	Thin	Titanium	DNA	Microfiber	Flex-Tuned	203g	W065-0601
Cromoly	100-130mm	142 x 265mm	Thin	Cromoly	HLX	Microfiber	Flex-Tuned	266g	W065-0602
WIDE WIDTH									
Titanium	130-160mm	150 x 265mm	Thin	Titanium	DNA	Microfiber	Flex-Tuned	208g	W065-0603
Cromoly	130-160mm	150 x 265mm	Thin	Cromoly	HLX	Microfiber	Flex-Tuned	276g	W065-0604



PURE

MEDIUM

DIMENSIONS: 148 x 275mm

PADDING: *Thick*

SADDLE DESCRIPTION

An excellent all-mountain and distance saddle, the Pure features a drop nose design that prevents hang ups, as well as enough padding for all day comfort. The Pure is a sure bet for almost any rider and an even better bet for bikepackers!



LEVEL	SIT BONE RANGE	DIMENSIONS	PADDING THICKNESS	RAIL MATERIAL	PADDING MATERIAL	COVER MATERIAL	SHELL MATERIAL	WEIGHT	PART #
PURE									
MEDIUM WIDTH									
Titanium	100-130mm	148 x 275mm	Thick	Carbon	DNA	Microfiber	Flex-Tuned	239g	W065-0608
Cromoly	100-130mm	148 x 275mm	Thick	Titanium	DNA	Microfiber	Flex-Tuned	340g	W065-0609
Steel	100-130mm	148 x 275mm	Thick	Steel	DNAx	Microfiber	Flex-Tuned	345g	W065-0610



DEVA

MEDIUM

DIMENSIONS: 145 x 260mm

PADDING: Medium

SADDLE DESCRIPTION

Among the most beloved saddles in WTB history, the Deva is back, in all its previous glory. Designed to suit the female form, without flaunting flowers or pink butterflies are comfortable enough that even the manliest men are able to look past the label.



LEVEL	SIT BONE RANGE	DIMENSIONS	PADDING THICKNESS	RAIL MATERIAL	PADDING MATERIAL	COVER MATERIAL	SHELL MATERIAL	WEIGHT	PART #
DEVA									
MEDIUM WIDTH									
Titanium	100-130mm	145 x 260mm	Medium	Titanium	DNA	Microfiber	Flex-Tuned	193g	W065-0617
Cromoly	100-130mm	145 x 260mm	Medium	Cromoly	HLX + Gel	Microfiber	Flex-Tuned	275g	W065-0618
Steel	100-130mm	145 x 260mm	Medium	Steel	DNAX	Microfiber	Flex-Tuned	305g	W065-0619



KODA

MEDIUM

WIDE

DIMENSIONS: 145 & 150 x 255mm

PADDING: Medium

SADDLE DESCRIPTION

Designed through testing and feedback from Rebecca Rusch, we set out to make the ultimate saddle to suit her endless rides. All-day comfort is achieved through a generously open channel that divides supportive outer zones to alleviate pressure on sensitive bits. Its short nose provides seamless on-off transitions while a slightly swooped shape provides an adequate tail to brace against. The Koda boasts a shape that everyone can enjoy, making it female-focused without being women's specific.



LEVEL	SIT BONE RANGE	DIMENSIONS	PADDING THICKNESS	RAIL MATERIAL	PADDING MATERIAL	COVER MATERIAL	SHELL MATERIAL	WEIGHT	PART #
KODA									
MEDIUM WIDTH									
Titanium	100-130mm	145 x 255mm	Medium	Titanium	DNA	Microfiber	Flex-Tuned	218g	W065-0611
Cromoly	100-130mm	145 x 255mm	Medium	Cromoly	HLX	Microfiber	Flex-Tuned	306g	W065-0612
Steel	100-130mm	145 x 255mm	Medium	Steel	DNAx	Microfiber	Flex-Tuned	315g	W065-0613
WIDE WIDTH									
Titanium	130-160mm	150 x 255mm	Medium	Titanium	DNA	Microfiber	Flex-Tuned	226g	W065-0614
Cromoly	130-160mm	150 x 255mm	Medium	Cromoly	HLX	Microfiber	Flex-Tuned	310g	W065-0615
Steel	130-160mm	150 x 255mm	Medium	Steel	DNAx	Microfiber	Flex-Tuned	316g	W065-0616





SPEED

MEDIUM

DIMENSIONS: 145 x 270mm

PADDING: Thick

SADDLE DESCRIPTION

WTB's best-selling saddle utilizes our shock absorbing, dual compound Soft-Shell base to provide unparalleled comfort at an excellent value. Supportive padding and mid dimensions make for a near fool-proof favorite at a don't-think-about-it-twice price.



Photo: Sven Martin

LEVEL	SIT BONE RANGE	DIMENSIONS	PADDING THICKNESS	RAIL MATERIAL	PADDING MATERIAL	COVER MATERIAL	SHELL MATERIAL	WEIGHT	PART #
SPEED									
MEDIUM WIDTH									
Cromoly	100-130mm	145 x 270mm	Thick	Cromoly	HLX	Microfiber	Soft-Shell	343g	W065-0626
Steel	100-130mm	145 x 270mm	Thick	Steel	DNAx	Microfiber	Soft-Shell	379g	W065-0620



SPEED SHE

WIDE

DIMENSIONS: 150 x 245mm

PADDING: Thick

SADDLE DESCRIPTION

This female-specific saddle has become one of our most popular models with its ergonomic shape, smooth curves and low-profile stitching. Its medium dimensions and rounded, fall-away profile make the Speed She an easy-to-ride, easy-to-maneuver, women's saddle.



Photo: Sven Martin

LEVEL	SIT BONE RANGE	DIMENSIONS	PADDING THICKNESS	RAIL MATERIAL	PADDING MATERIAL	COVER MATERIAL	SHELL MATERIAL	WEIGHT	PART #
SPEED SHE									
WIDE WIDTH									
Cromoly	130-160mm	150 x 245mm	Thick	Cromoly	HLX + Gel	Microfiber	Flex-Tuned	296g	W065-0627
Steel	130-160mm	150 x 245mm	Thick	Steel	DNAX	Microfiber	Flex-Tuned	325g	W065-0622





COMFORT

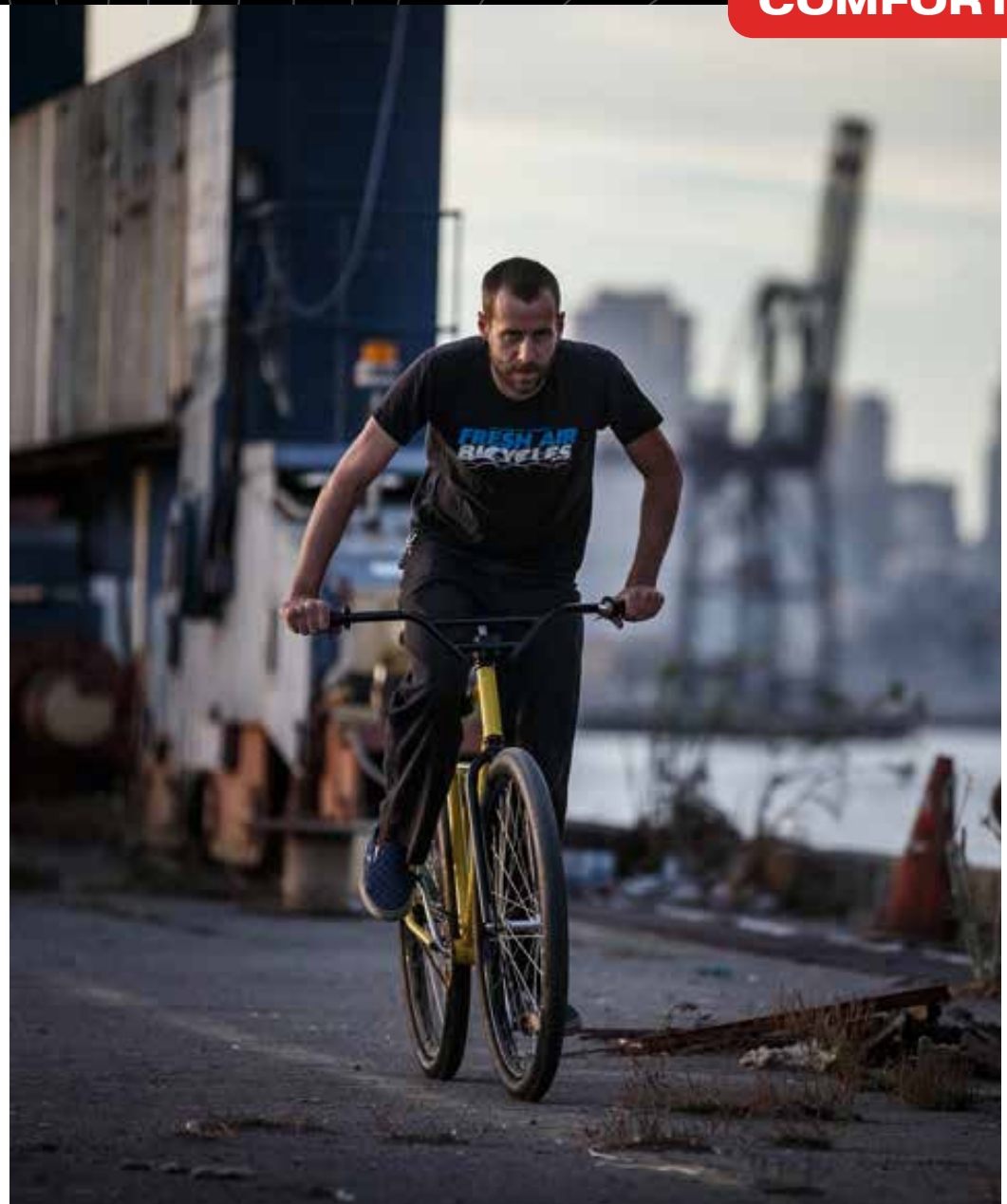
WIDE

DIMENSIONS: 174 x 270mm

PADDING: *Thick*

SADDLE DESCRIPTION

The sporty Comfort saddle suits recreational and leisure riders looking for a deeply cushioned saddle with broad sit bone support. This is the official saddle of the WTB employee grocery-getter cruiser fleet.



LEVEL	SIT BONE RANGE	DIMENSIONS	PADDING THICKNESS	RAIL MATERIAL	PADDING MATERIAL	COVER MATERIAL	SHELL MATERIAL	WEIGHT	PART #
COMFORT									
WIDE WIDTH									
Steel	130-160mm	174 x 270mm	Thick	Steel	DNAX	Microfiber	Flex-Tuned	390g	W065-0621

RIMS

PUTTING PERFORMANCE FIRST

Optimized according to their intended usage, every single WTB rim is designed to withstand abuse at performance-focused weights, while also ensuring it doesn't fall apart simply in the name of saving weight. TCS 2.0 rims now provide riders with a more robust, easily installed and dependable tubeless system. TCS 2.0 revolutionized rim technology with an innovative design that provides easier tire installation and removal while also increases the overall reliability of the tubeless system.



We've streamlined our rim line to be more comprehensive and intuitive regarding the widths available for each product family. Our toughest rims, KOM Tough and Asym, are only available in wider inner rim widths that are most appropriate for trail, enduro and gravity use. On the other end of the spectrum, our lightest rims, KOM Light and Frequency CX, are available in the full spectrum of inner rim widths to provide a lightweight option for everything from adventure road usage to plus-size trail riding. This chart showcases the full range of our new TCS 2.0 rims, which provide a more robust, easily installed and dependable tubeless system through the use of an all-new Solid Strip.

RIM NAME	WHEEL SIZE	i19	i21	i23	i25	i27	i29	i30	i35	i40	i45	TECHNOLOGIES
CZR	29"											
HTZ	27.5"											
	29"											
KOM LIGHT	27.5"											
	29"											
KOM TOUGH	27.5"											
	29"											

INTRO

TIRES

SADDLES

RIMS

GRIPS

ACCS.

TERMINOLOGY

ISO/ETRTO COMPLIANT

Internationally standardized tire bead and rim sizing. This ensures that the fit and relationship between a rim and a tire are as secure and user-friendly as possible.

CID (COMPATIBLE INTEGRATED DESIGN)

Each part within the system works with others available in the industry. If you need a new part, chances are it's already in stock at your local bike shop.

SLEEVED

Rim ends are joined together using an extruded aluminum insert that matches the inner cavity of the rim. Both ends of the rim are hydraulically pressed over the tight tolerances of the insert and then further reinforced by industrial epoxy.

TECHNOLOGY

ON-RAMP

An angled inner rim profile that allows the bead of the tire to move easily and smoothly into place during installation and inflation.

4D DRILLING

Our spoke holes are drilled at precise departure angle to align the spoke head and nipple with the hub flange, eliminating binding and lateral loading while also dispersing the load more evenly over a greater area. This prolongs the wheel's lifespan and increases stability.

I-BEAM

The I-Beam adds strength to the inner rim cavity. This distinctive support counteracts spoke loads and provides lateral rigidity.

DOUBLE WALL

Two separate layers of rim material provide increased structural strength while also preventing any contact between spoke nipples and the rim strip/tape which could lead to an unreliable tubeless set-up.

DROPZONE

Designed to make tire removal easier, the Dropzone is a downward slope from the bead seat to the center of the rim, which allows the tire bead to quickly and easily fall into the optimal area for tire removal. Dropzone is only found on rims that have an inner rim width of 40-45mm.

SIDEWALL INDICATOR

Grooved braking surface that indicates when the rim needs to be replaced due to sidewall wear from the use of rim brakes. It's time to replace the rim once the braking surface wears even with the bottom of the groove.

DISC ONLY

Disc Only rims benefit from lighter weights because they do not require the amount of material traditional rims require for the braking surface. Do not use Disc Only rims with rim brake systems, such as cantilever or v-brake.

ASYM

Asym rims use an asymmetrical design to create a rim that more evenly distributes spoke tension, resulting in an easier to build, stronger, and more reliable wheel.

E-BIKE COMPATIBLE

Rims designated as E-Bike Compatible are constructed using more material to defend against the hefty rim strikes that are common on e-bikes. Thicker walls not only provide additional strength but also increase lateral rim stiffness to keep everything in line under heavy cornering. E-Bike Compatible rims are the best choice when you need a rim that is unmatched in strength and durability.

TUBE-TYPE

Tube Type rims are designed to be used with inner tubes. These rims utilize an ETRTO tube type bead shape that relies on tire retention through proper installation and inflation of a properly sized inner tube.

SYSTEMS

TCS

Designed to meet UST and ETRTO Standards, TCS (Tubeless Compatible System) tires feature the best of both worlds: they boast the ride benefits of a tubeless tire with the minimal weight of a tube type tire. This versatile system combines WTB's weight optimized casings, tread compound of your choice, and a tubeless, UST bead.

TCS TAPE

Light, strong, and extra sticky for durable, long-lasting, leak-resistant performance.

TCS VALVE

Taper design allows for optimal fit on a wide variety of rims. Removable valve core for easy cleaning and uninterrupted inflation. Available in 34mm and 46mm options as well as some vibrant anodized colors.

TCS 2.0

TCS 2.0 creates a more robust, easily installed and dependable tubeless system. A recessed channel along the center of TCS 2.0 rims allows installation of the all-new Solid Strip, which prevents tubeless tape from sagging at the spoke holes and results in a smooth, consistent interface between the tire and rim. Installation of the Solid Strip allows for more pliable, and easy to install, TCS Tape to provide the airtight seal needed for a proper tubeless set-up.

SOLID STRIP

Narrower and more durable rim strip that sits in the rim bed to eliminate any possibility of a broken spoke puncturing the tubeless tape and causing the system to lose air. Solid Strip prevents tubeless tape from sagging at the spoke holes, which ensures a smooth surface between the tire and rim, prevents air from escaping during installation and makes it considerably easier to mount tubeless tires using only a floor pump. Installation of the Solid Strip allows for application of TCS Tape, which makes tubeless tape installation much easier.



NEW

CZR

700

29"

USAGES: *Adventure Road • Gravel • Cross-Country • Trail • Enduro • Gravity*INNER RIM WIDTHS: *i23 • i30*

RIM DESCRIPTION

Our flagship CZR carbon rims deliver minimal rotational weight and fine-tuned compliance to make you feel at one with the terrain. Reinforced spoke holes, TCS 2.0 technology, an asymmetrical design and two years of development make them the most dependable carbon rims on the market. CZR rims set themselves apart from the pack by providing unbeatable strength and ride quality at a more affordable price. Available in i23 and i30 inner widths to satisfy the needs of both gravel and mountain riders.

RIM TECHNOLOGY



WHEEL SIZE	INNER RIM WIDTH	WEIGHT	SPOKE HOLE COUNT	RIM SIZE DESIGNATION	OPTIMAL TIRE SECTION WIDTHS	PART #
700						
700	i23	TBD	24h	23-622	30 - 66mm	W020-0606
700	i23	TBD	28h	23-622	30 - 66mm	W020-0605
29"						
29"	i30	TBD	28h	30-622	55 - 65mm	W020-0607
29"	i30	TBD	32h	30-622	55 - 65mm	W020-0608



Photo: Syke Schillhammer


NEW

HTZ

27.5" / 650
29" / 700
USAGES: *E-Bike • Gravity • Bikepacking*
INNER RIM WIDTHS: *i23 • i25 • i27 • i30 • i35*

RIM DESCRIPTION

E-bikes add to the riding experience by simply providing more for less. More distance, more laps, more climbs and more descents. With all those "mores" also comes more weight continually bashing on the components of an e-bike. In order to overcome the increased forces induced by the technological progression of modern e-bikes, we designed our HTZ rims with more material in every area of the rim profile. Every wall of the rim is 20-30% thicker in comparison to those on our standard rims, which we then paired with our I-Beam technology to ensure no beating was too great for these rims. All HTZ rims are TCS 2.0 tubeless, feature a 6mm offset, and are available with 32-hole spoke hole drilling to provide compatibility with a wide variety of hubs equipped on e-bikes ranging from e-assist gravel bikes to dual-crown downhill bikes that no longer need a truck to be shuttled.

RIM TECHNOLOGY


WHEEL SIZE
INNER RIM WIDTH
WEIGHT
SPOKE HOLE COUNT
RIM SIZE DESIGNATION
OPTIMAL TIRE SECTION WIDTHS
PART #

27.5" / 650

27.5"	i27	TBD	32h	27-584	55-60mm	W020-0599
27.5"	i30	TBD	32h	30-584	55-65mm	W020-0601
27.5"	i35	TBD	32h	35-584	55-72mm	W020-0603

29" / 700

29"/700	i23	TBD	32h	23-622	30-54mm	W020-0597
29"/700	i25	TBD	32h	25-622	42-60mm	W020-0598
29"	i27	TBD	32h	27-622	55-60mm	W020-0600
29"	i30	TBD	32h	30-622	55-65mm	W020-0602
29"	i35	TBD	32h	35-622	55-72mm	W020-0604





KOM LIGHT

27.5"
29" / 700

USAGES: *Adventure Road • Gravel • Cyclocross • Cross-Country • Trail*

INNER RIM WIDTHS: *i21 • i23 • i25 • i30 • i35 • i40 • i45*

RIM DESCRIPTION

Our lightest alloy rim, the KOM Light epitomizes affordable, high-end performance at nearly the same weight as carbon. KOM Light rims employ an open cavity design to make them sprightly enough for 200 miles of gravel, while strong AL 6069 alloy make them strong enough to handle daily hammering on a trail bike. We've also updated the spoke bed to provide a more congruent interface between the spoke nipple and rim. Our new TCS 2.0 rims deliver the easiest to mount and most reliable tubeless system we've ever made.

RIM TECHNOLOGY



WHEEL SIZE	INNER RIM WIDTH	WEIGHT	SPOKE HOLE COUNT	RIM SIZE DESIGNATION	OPTIMAL TIRE SECTION WIDTHS	PART #
27.5"						
27.5"	i23	TBD	32h	23-584	30mm-54mm	W020-0578
27.5"	i25	423g	32h	25-584	42mm-60mm	W020-0557
27.5"	i30	476g	32h	29-584	55mm-65mm	W020-0559
29" / 700						
700	i21	TBD	28h	21-622	30mm-54mm	W020-0579
29"	i21	426g	32h	21-622	30mm-54mm	W020-0555
29"	i23	443g	32h	23-622	30mm-54mm	W020-0556
29"	i25	450g	32h	25-622	30mm-54mm	W020-0558
29"	i30	509g	32h	29-622	55mm-65mm	W020-0560



Photo: Marc Gasch





KOM TOUGH

27.5"

29"

USAGES: *Trail • Enduro • Gravity • Bikepacking*

INNER RIM WIDTHS: *i25 • i30 • i35 • i40 • i45*

RIM DESCRIPTION

Built for bashing, whether on a gravity shred sled or a fully loaded bikepacking rig. KOM Tough rims are extruded from top-tier AL 6069 alloy to provide utmost durability at a reasonable weight. Our legendary I-Beam construction has evolved to further reinforce the rim with dual support beams that provide increased strength and stiffness for the world's most aggressive riders. Proven on the toughest tracks of the Enduro World Series, depended on for daily trail rides, and trusted while bikepacking in remote regions of the world.

RIM TECHNOLOGY



WHEEL SIZE	INNER RIM WIDTH	WEIGHT	SPOKE HOLE COUNT	RIM SIZE DESIGNATION	OPTIMAL TIRE SECTION WIDTHS	PART #
27.5"						
27.5"	i25	466g	32h	25-584	42mm-60mm	W020-0565
27.5"	i29	490g	32h	29-584	55mm-65mm	W020-0567
27.5"	i35	567g	32h	35-584	55mm-72mm	W020-0569
27.5"	i40	614g	32h	40-584	64mm-72mm	W020-0571
29"						
29"	i25	493g	32h	25-622	42mm-60mm	W020-0566
29"	i29	522g	32h	29-622	55mm-65mm	W020-0568
29"	i35	615g	32h	35-622	55mm-72mm	W020-0570
29"	i40	651g	32h	40-622	64mm-72mm	W020-0572

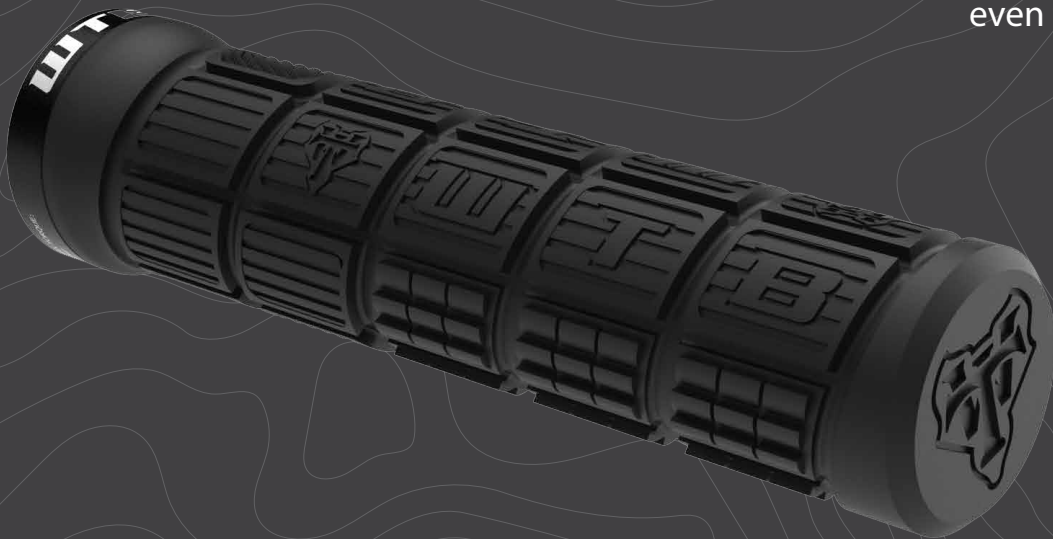


Photo: Sven Martin

GRIPS

ULTIMATE HAND COMFORT

Too often overlooked, the interface between hand and handlebar is one of the most sensitive contact points between rider and bike. We introduced PadLoc grips as a means of providing unrivaled hand comfort through more squishy rubber and fewer metal clamps. More of a traditionalist when it comes to grips? Check out the large, squishy blocks of the all-new Wafel grip and don't even try to tell us you don't want to give it a squeeze!





WAFEL

SINGLE CLAMP

USAGES: *Trail • Enduro • Gravity • Bikepacking*

SIZE: *130 x 30mm*

GRIP DESCRIPTION

Stickier than syrup and more desirable than bacon. Large blocks of conforming rubber cover the entirety of the Wafel grip, while ample spacing allows them to smoosh independently for increased grip while also providing an exit channel for muck and water.

SIZE	COLORS	DETAILS	PART #
130mm x 30mm	Blk /Blk	Single Clamp-On, DNA Rubber, Large Square Knobs	W075-0064



COMFORT ZONE

DUAL CLAMP

USAGES: *Urban • Cross-Country • Trail • Bikepacking*

SIZE: *142 x 30mm*

GRIP DESCRIPTION

The Comfort Zone Clamp-On grips feature a large, soft platform to dissipate force onto a greater surface area, preventing soreness and pain from occurring. Soft DNA rubber and smooth edges make the Comfort Zone grips a best seller among all rider types.

SIZE	COLORS	DETAILS	PART #
142mm x 30mm	Blk /Blk	Clamp-On, DNA compound, WTB logo, includes endplugs	W075-0024



MOTO X

DUAL CLAMP

USAGES: *Cross-Country • Trail • Enduro*

SIZE: *135 x 35mm*

GRIP DESCRIPTION

The Moto X Clamp on combines muscular, large knobs with a wide diameter. At 35 millimeters in width, it is the thickest grip in the WTB line, providing the perfect point of contact for riders with large hands. Dual aluminum clamps securely attach the grip to the bar for optimal fit.



TECH TRAIL

DUAL CLAMP

USAGES: *Cross-Country • Trail • Enduro*

SIZE: *135 x 30mm*

GRIP DESCRIPTION

These slim grips feature dual aluminum clamps and a windowed sleeve for superior handlebar feel. At 30 millimeters in diameter, they are one of the narrowest grips in the WTB line providing the perfect point of contact for riders with medium to small hands.

SIZE	COLORS	DETAILS	PART #
135mm x 35mm	Blk / Blk	Dual Clamp-On, DNA rubber, large knobs, windowed sleeve	W075-0031

SIZE	COLORS	DETAILS	PART #
135mm x 30mm	Black	Dual Clamp-On, DNA rubber, small knobs, windowed sleeve	W075-0034



TECHNICAL TRAIL

SLIP-ON

USAGES: *Cross-Country • Trail*

SIZE: *130 x 27mm*

GRIP DESCRIPTION

These slim grips feature built-in zip-tie channels to keep the grip stable in sloppy conditions. The Technical grips are easy to cut and are compatible with trigger and grip shift.

SIZE	COLORS	DETAILS	PART #
130mm x 27mm	Blk /Blk	DNA compound, small spikey pattern with closed ends	W075-0013



TRAIL II

SLIP-ON

USAGES: *Cross-Country • Trail • Enduro*

SIZE: *142 x 30mm*

GRIP DESCRIPTION

Trail II grips feature a supportive, angled ridge to prevent outward hand slippage while the scaly design delivers an unshakeable grip through any trail condition at hand.

SIZE	COLORS	DETAILS	PART #
142mm x 30mm	Blk /Blk	WTB DNA rubber	W075-0061



ORIGINAL TRAIL

SLIP-ON

USAGES: *Cross-Country • Trail*

SIZE: *130 x 27mm*

GRIP DESCRIPTION

The WTB Original Trail grip excels on XC, trail, and all-purpose riding. With its smooth octagonal shape, DNA rubber compound, and small flanges, the Original Trail grip is comfortable during all-day epic rides.

SIZE	COLORS	DETAILS	PART #
130mm x 27mm	Blk /Blk	DNA compound, smooth octagonal ergo shape with closed ends	W075-0001



WEIRWOLF

SLIP-ON

USAGES: *Cross-Country • Trail*

SIZE: *135 x 33mm*

GRIP DESCRIPTION

Identical to the popular and aggressive WeirWolf tire tread, these grips are perfect for fast-paced, all-mountain riding. These dual compound grips come in three colors and the ends are closed for added durability.

SIZE	COLORS	DETAILS	PART #
135mm x 35mm	Blk /Blk	Gel contact with firm Kraton base, aggressive tread	W075-0018
	Blk /Red		W075-0019



DC TRAIL

SLIP-ON

USAGES: *Cross-Country • Trail*

SIZE: *135 x 32mm*

GRIP DESCRIPTION

The DC Trail's plush outer gel with a tight base material for twist resistance is perfect for XC, ATB and comfort riding. The linked, diamond-shaped WTB logos and slightly raised center provide an ergonomic feel and maximum grip in nearly any condition.

SIZE	COLORS	DETAILS	PART #
135mm x 32mm	Blk /Blk	Gel contact with firm Kraton base, smooth, easy-on-the-hands tread	W075-0007



COMMANDER

PADLOC™

USAGES: *Cross-Country • Trail • Enduro • Gravity*

SIZE: *135 x 30mm*

GRIP DESCRIPTION

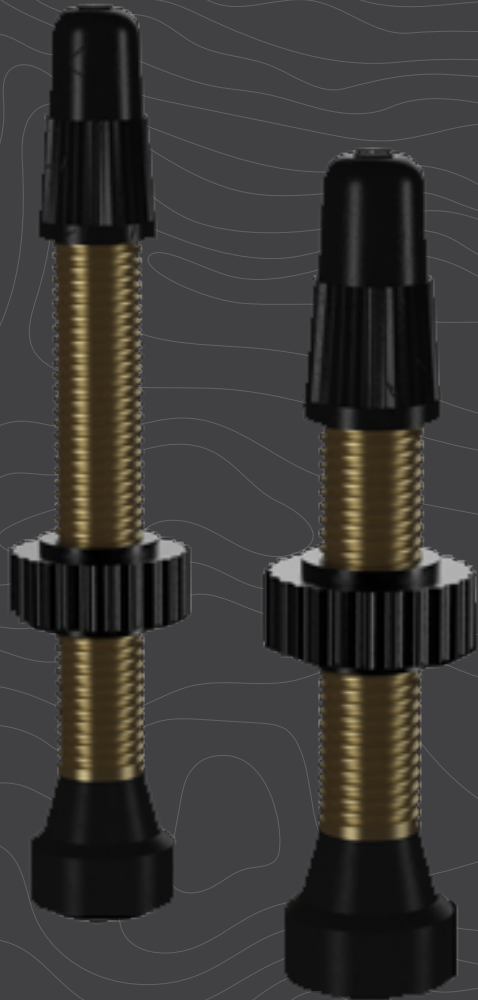
Prominent lettering lets people know you're in charge, while Contact Rubber and the PadLoc Relief eliminate movement and provide an invitingly tactile feel. Ride hard and shift happy. (Handlebars must be cut with a specific angled cut to install a PadLoc grip.)

SIZE	COLORS	DETAILS	PART #
135mm x 30mm	Blk /Gray	Zero Rotational Slip, Comfort Design	W075-0060

ACCESSORIES

IT'S THE SMALL THINGS...

Don't forget the little guys! They say a new set of tires is the best upgrade you can do to your bike, but you won't get very far without tubeless tape and valves to complete the package. It also just so happens that those TCS valves come in a variety of colors that add flare to your favorite bikes. We hold a lot of faith in tubeless, but it's also not a bad idea to carry a spare tube in case you decide to ride through the cactus rather than around it.





TCS TAPE

11m
66m

USAGES: *Tubeless Systems*

INNER RIM WIDTHS: *i19 • i21 • i23 • i25 • i27 • i29 • i35 • i40 • i45*

TCS TAPE DESCRIPTION

Your tubeless system is only as good as your tubeless tape, which is why we make the stickiest, most durable, tape possible. Our 11 meter rolls provide enough length to wrap 5 wheels, while the 66 meter rolls will accommodate 27 wheels – that's a lot of wheels. No more fumbling about, scraping together odds and ends to tape up a wheel. Both lengths are available in 24, 26, 28, 30, 34, 40, 45 and 50mm widths. Always be sure to use TCS tape that is 5mm wider than the inner width of the rim.

WIDTH	LENGTH	RIM WIDTH APPLICATION	PART #
11m			
24mm	11m	i19 - for 5 wheels	W095-0020
26mm		i21- for 5 wheels	W095-0021
28mm		i23 - for 5 wheels	W095-0022
30mm		i25 - for 5 wheels	W095-0001
32mm		i27 - for 5 wheels	W095-0086
34mm		i29 - for 5 wheels	W095-0041
40mm		i35 - for 5 wheels	W095-0042
45mm		i40 - for 5 wheels	W095-0054
50mm		i45 - for 5 wheels	W095-0043
55m			
24mm	66m	i19 - bulk	W095-0002
26mm		i21 - bulk	W095-0003
28mm		i23 - bulk	W095-0004
30mm		i25 - bulk	W095-0019
32mm		i27 - bulk	W095-0087
34mm		i29 - bulk	W095-0038
40mm		i35 - bulk	W095-0039
45mm		i40 - bulk	W095-0052
50mm		i45 - bulk	W095-0040



TCS VALVES

34mm

46mm

USAGES: *Tubeless Systems*

LENGTHS: *34mm • 46mm*

VALVE DESCRIPTION

Our aluminum TCS tubeless valves shed grams, come in catchy anodized red, orange, green, black, or blue, and are available in 34 and 46mm lengths for various rim depths. A stepped lock nut provides compatibility for various sizes of spoke holes while a removable core makes setting beads a cinch. Add some bling to your fancy wheels with aluminum TCS valves. Looking for something bombproof? Our brass TCS tubeless valves provide ultimate reliability at an even more affordable price point. Sold in packs of 2.



COLOR	LENGTH	DETAILS	PART #
34mm			
Brass	34mm	Presta Valve - 2 pieces (pair)	W095-0011
Green			W095-0049
Orange			W095-0061
Black			W095-0005
Red			W095-0006
Blue			W095-0007
46mm			
Brass	46mm	Presta Valve - 2 pieces (pair)	W095-0012
Green			W095-0050
Orange			W095-0062
Black			W095-0008
Red			W095-0009
Blue			W095-0010



TUBES

700

26"

27.5"

29"

USAGES: *Tube-Type Tires • Spare for Tubeless Tires*

VALVE: *Presta*

TUBE DESCRIPTION

Inner tubes of all sizes to fit every bike in your quiver. Durable enough to keep you rolling, yet light enough to not feel overly cumbersome in your jersey pocket. All inner tubes feature a Presta valve. Don't want to deal with tubes any longer? TCS sealant-based tubeless will change your riding experience.



DIAMETER	WIDTH	DETAILS	PART #
700			
700	18 - 25mm	Presta - 33mm valve	W095-0044
700	18 - 25mm	Presta - 48mm valve	W095-0057
700	28 - 38mm	Presta - 33mm valve	W095-0046
700	28 - 38mm	Presta - 48mm valve	W095-0059
700	38 - 45mm	Presta - 33mm valve	W095-0047
700	38 - 45mm	Presta - 48mm valve	W095-0066
26"			
26"	1.5 - 2.2"	Presta - 33mm valve	W095-0041
26"	2.3 - 2.5"	Presta - 33mm valve	W095-0043
27.5"			
27.5" / 650	1.75 - 2.1"	Presta - 48mm valve	W095-0067
27.5"	1.9 - 2.3"	Presta - 33mm valve	W095-0054
27.5"	1.9 - 2.3"	Presta - 48mm valve	W095-0063
27.5"	2.4 - 2.6"	Presta - 33mm valve	W095-0068
27.5"	2.4 - 2.6"	Presta - 48mm valve	W095-0070
27.5"	2.8 - 3.0"	Presta - 33mm valve	W095-0062
27.5"	2.8 - 3.0"	Presta - 48mm valve	W095-0064
29"			
29"	1.9 - 2.3"	Presta - 33mm valve	W095-0048
29"	1.9 - 2.3"	Presta - 48mm valve	W095-0065
29"	2.4 - 2.6"	Presta - 33mm valve	W095-0069
29"	2.4 - 2.6"	Presta - 48mm valve	W095-0071



MUD GUARD

GRAVEL

MTB

USAGES: *Shredding Through Muck*

CONDITIONS: *SLOPPY!*

MUD GUARD DESCRIPTION

Tacky trails and damp roads, they're what dreams are made of. That doesn't mean we want our faces plastered with the muck that comes along with them. Using nothing more than a handful of zip ties, our minimalistic mud guards attach to your fork in less than a minute to keep your vision free of mud and focused on the turn ahead.



SIZE	PART #
GRAVEL	
Gravel or cyclocross bike specific	W070-0036
MTB	
Mountain bike specific	W070-0035



FOLLOW US ONLINE



facebook.com/*wildernesstrailbikes*



twitter.com/*ridewtb*



instagram.com/*wildernesstrailbikes*